

## Laminin gamma 1 Rabbit mAb

Catalog No: #56429

Package Size: #56429-1 50ul #56429-2 100ul

Orders: [order@signalwayantibody.com](mailto:order@signalwayantibody.com)Support: [tech@signalwayantibody.com](mailto:tech@signalwayantibody.com)

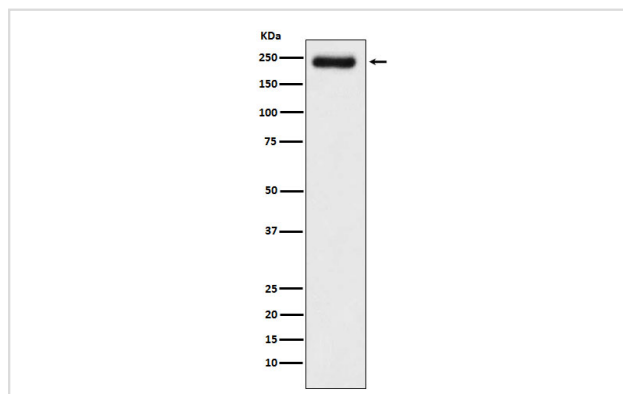
## Description

Product Name	Laminin gamma 1 Rabbit mAb
Host Species	Rabbit
Clonality	Monoclonal
Isotype	Rabbit IgG
Purification	Affinity-chromatography
Applications	WB FC
Species Reactivity	Human
Specificity	Laminin gamma 1 Antibody detects endogenous levels of total Laminin gamma 1
Immunogen Description	A synthesized peptide derived from human Laminin gamma 1
Other Names	LAMB2; lamc1; Laminin B2 chain; Laminin subunit gamma-1; Laminin-1 subunit gamma; Laminin-10 subunit gamma; Laminin-11 subunit gamma; Laminin-2 subunit gamma; Laminin-3 subunit gamma; Laminin-4 subunit gamma; Laminin-6 subunit gamma; Laminin-7 subunit gamma; Laminin-8 subunit gamma; Laminin-9 subunit gamma;
Accession No.	Uniprot:P11047/Q5VYE7/Q6NVY8
Uniprot	P11047/Q5VYE7/Q6NVY8
Calculated MW	200-280kDa
Formulation	Rabbit IgG in phosphate buffered saline , pH 7.4, 150mM NaCl, 0.02% sodium azide and 50% glycerol.
Storage	Store at +4ℳ C short term. Store at -20ℳ C long term. Avoid freeze / thaw cycle.

## Application Details

WB:1:500~1:2000FC:1:50

## Images



Western blot analysis of Laminin gamma 1 expression in A431 cell lysate.

## Product Description

Binding to cells via a high affinity receptor, laminin is thought to mediate the attachment, migration and organization of cells into tissues during

embryonic development by interacting with other extracellular matrix components.

---

Note: This product is for in vitro research use only