

## Rab25 Rabbit mAb

Catalog No: #56430

Package Size: #56430-1 50ul #56430-2 100ul

Orders: order@signalwayantibody.com

Support: tech@signalwayantibody.com

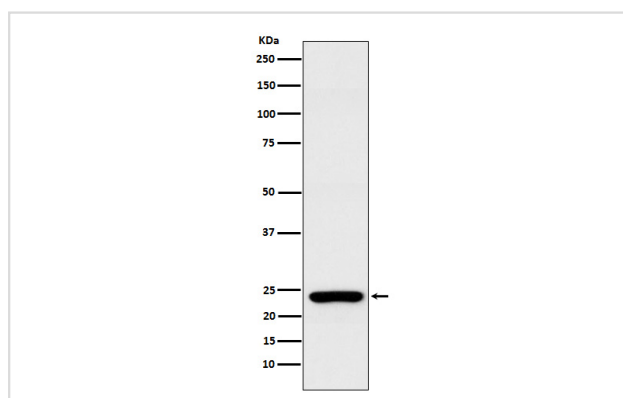
## Description

Product Name	Rab25 Rabbit mAb
Host Species	Rabbit
Clonality	Monoclonal
Isotype	Rabbit IgG
Purification	Affinity-chromatography
Applications	WB
Species Reactivity	Human
Specificity	Rab25 Antibody detects endogenous levels of total Rab25
Immunogen Description	A synthesized peptide derived from human Rab25
Other Names	CATX8; RAB11C; RAB25;
Accession No.	Uniprot:P57735
Uniprot	P57735
Calculated MW	23kDa
Formulation	Rabbit IgG in phosphate buffered saline , pH 7.4, 150mM NaCl, 0.02% sodium azide and 50% glycerol.
Storage	Store at +4ℳ C short term. Store at -20ℳ C long term. Avoid freeze / thaw cycle.

## Application Details

WB:1:500~1:1000

## Images



Western blot analysis of Rab25 expression in MCF7 cell lysate.

## Product Description

Involved in the regulation of cell survival. Promotes invasive migration of cells in which it functions to localize and maintain integrin alpha-V/beta-1 at the tips of extending pseudopodia (PubMed:17925226). Involved in the regulation of epithelial morphogenesis through the control of CLDN4 expression and localization at tight junctions (By similarity).

---

Note: This product is for in vitro research use only