

Human Kappa Chain Rabbit mAb

Catalog No: #56434

Package Size: #56434-1 50ul #56434-2 100ul

Orders: order@signalwayantibody.comSupport: tech@signalwayantibody.com

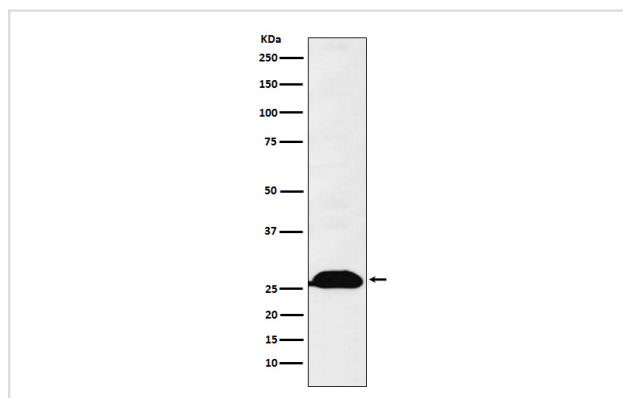
Description

Product Name	Human Kappa Chain Rabbit mAb
Host Species	Rabbit
Clonality	Monoclonal
Isotype	Rabbit IgG
Purification	Affinity-chromatography
Applications	WB IHC ICC/IF
Species Reactivity	Human
Specificity	Human Kappa Chain Antibody detects endogenous levels of total Human Kappa Chain
Immunogen Description	A synthesized peptide derived from human Human Kappa Chain
Other Names	HCAK1; Ig kappa chain C region; IGKC; IMMUNOGLOBULIN InV; Km;
Accession No.	Uniprot:P01834
Uniprot	P01834
Calculated MW	26kDa
Formulation	Rabbit IgG in phosphate buffered saline , pH 7.4, 150mM NaCl, 0.02% sodium azide and 50% glycerol.
Storage	Store at +4 Λ C short term. Store at -20 Λ C long term. Avoid freeze / thaw cycle.

Application Details

WB:1:500~1:2000IHC:1:50~1:200ICC/IF:1:50~1:200

Images



Western blot analysis of Human Kappa Chain expression in Human fetal spleen lysate.

Product Description

Immunoglobulins belong to a group of related glyco proteins which make up 20% of serum proteins. Antigens and immunoglobulins react to confer immunity to individuals. Immunoglobulins have similar structures of two identical heavy chains and two identical light chains.

Note: This product is for in vitro research use only