

Human IgG2 Rabbit mAb

Catalog No: #56472

Package Size: #56472-1 50ul #56472-2 100ul

Orders: order@signalwayantibody.com

Support: tech@signalwayantibody.com

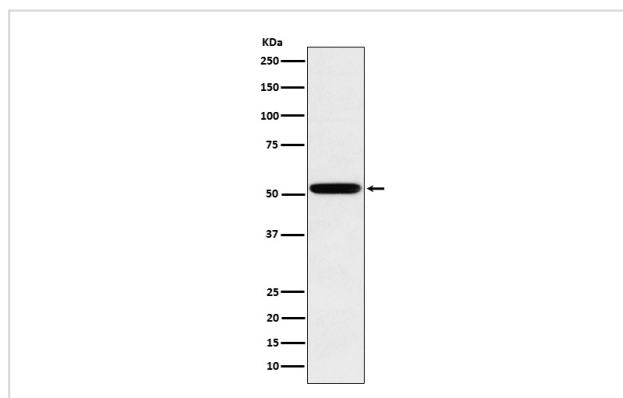
Description

Product Name	Human IgG2 Rabbit mAb
Host Species	Rabbit
Clonality	Monoclonal
Isotype	Rabbit IgG
Purification	Affinity-chromatography
Applications	WB IHC ICC/IF
Species Reactivity	Human
Specificity	Human IgG2 Antibody detects endogenous levels of total human IgG2
Immunogen Description	A synthesized peptide derived from human IgG2
Other Names	IGHG2; immunoglobulin Gm2; immunoglobulin heavy constant gamma 2 (G2m marker);
Accession No.	Uniprot:P01859
Uniprot	P01859
Calculated MW	53kDa
Formulation	Rabbit IgG in phosphate buffered saline , pH 7.4, 150mM NaCl, 0.02% sodium azide and 50% glycerol.
Storage	Store at +4 Λ C short term. Store at -20 Λ C long term. Avoid freeze / thaw cycle.

Application Details

WB:1:1000~1:5000IHC:1:100~1:500ICC/IF:1:50~1:200

Images



Western blot analysis of human IgG2 expression in Human spleen lysate.

Product Description

There are four IgG subclasses (IgG1, 2, 3 and 4) in humans, named in order of their abundance in serum (IgG1 being the most abundant). IgG2 is the only IgG subclass which passes through the placenta at a level generally lower than that found in the mother.

Note: This product is for in vitro research use only