

## CEACAM1 Rabbit mAb

Catalog No: #56473

Package Size: #56473-1 50ul #56473-2 100ul

Orders: [order@signalwayantibody.com](mailto:order@signalwayantibody.com)Support: [tech@signalwayantibody.com](mailto:tech@signalwayantibody.com)

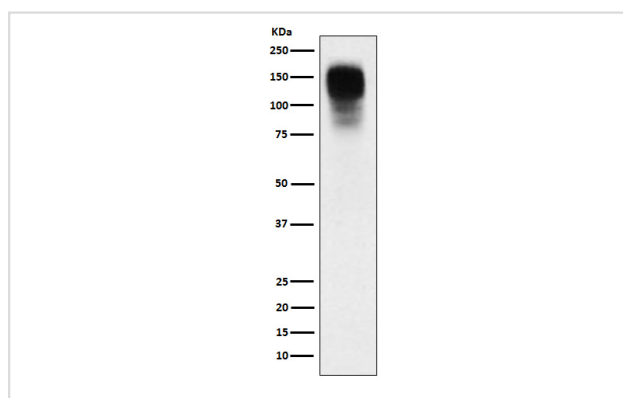
## Description

Product Name	CEACAM1 Rabbit mAb
Host Species	Rabbit
Clonality	Monoclonal
Isotype	Rabbit IgG
Purification	Affinity-chromatography
Applications	WB IHC ICC/IF IP
Species Reactivity	Human
Specificity	CEACAM1 Antibody detects endogenous levels of total CEACAM1
Immunogen Description	A synthesized peptide derived from human CEACAM1
Other Names	BGP-1; BGPI; CD66a; CEACAM1;
Accession No.	Uniprot:P13688
Uniprot	P13688
Calculated MW	120-150kDa
Formulation	Rabbit IgG in phosphate buffered saline , pH 7.4, 150mM NaCl, 0.02% sodium azide and 50% glycerol.
Storage	Store at +4ℳ C short term. Store at -20ℳ C long term. Avoid freeze / thaw cycle.

## Application Details

WB:1:1000~1:5000IHC:1:50~1:200ICC/IF:1:50~1:200IP:1:50

## Images



Western blot analysis of CEACAM1 expression in SW480 cell lysate.

## Product Description

Plays a role as coinhibitory receptor in immune response, insulin action and functions also as an activator during angiogenesis.

---

Note: This product is for in vitro research use only