

Aminopeptidase A / CD249 Rabbit mAb

Catalog No: #56486



Package Size: #56486-1 50ul #56486-2 100ul

Orders: order@signalwayantibody.com
Support: tech@signalwayantibody.com

Description

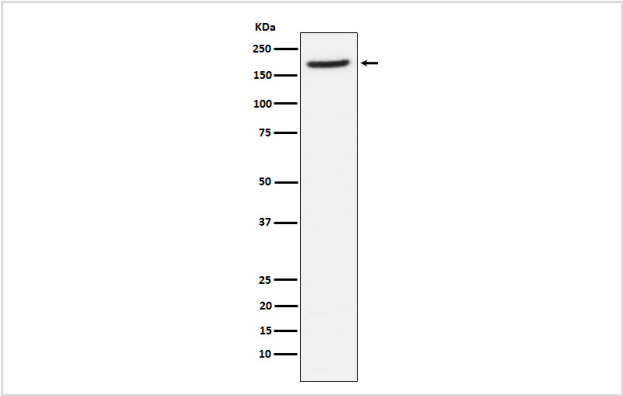
Product Name	Aminopeptidase A / CD249 Rabbit mAb
Host Species	Rabbit
Clonality	Monoclonal
Isotype	Rabbit IgG
Purification	Affinity-chromatography
Applications	WB IHC
Species Reactivity	Human
Specificity	Aminopeptidase A / CD249 Antibody detects endogenous levels of total Aminopeptidase A / CD249
Immunogen Description	A synthesized peptide derived from human Aminopeptidase A / CD249
Other Names	Aminopeptidase A; APA; bp1; CD249; EAP; Enpep; Gp160; Ly51;
Accession No.	Uniprot:Q07075
Uniprot	Q07075
Calculated MW	160kDa
Formulation	Rabbit IgG in phosphate buffered saline , pH 7.4, 150mM NaCl, 0.02% sodium azide and 50% glycerol.
Storage	Store at +4Λ C short term. Store at -20Λ C long term. Avoid freeze / thaw cycle.

Application Details

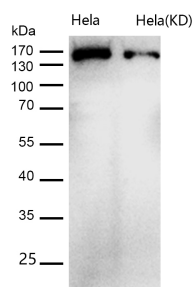
WB:1:1000~1:5000

IHC:1:50~1:200

Images



Western blot analysis of Aminopeptidase A / CD249 expression in human fetal lung lysate.



All lanes use the Antibody at 1:1K dilution for 1 hour at room temperature.

Product Description

Appears to have a role in the catabolic pathway of the renin-angiotensin system. Probably plays a role in regulating growth and differentiation of early B-lineage cells.

Note: This product is for in vitro research use only