

LRP6 Rabbit mAb

Catalog No: #56494

Package Size: #56494-1 50ul #56494-2 100ul

Orders: order@signalwayantibody.comSupport: tech@signalwayantibody.com

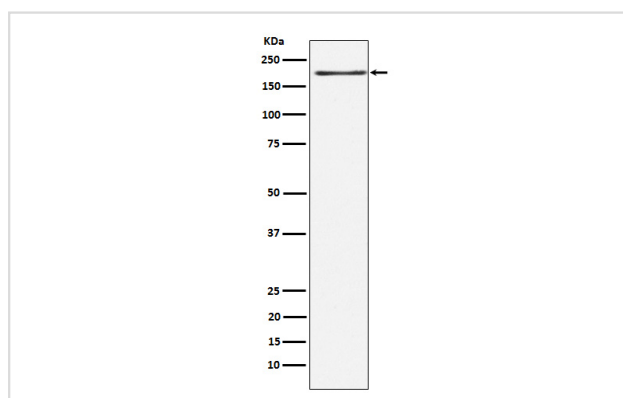
Description

Product Name	LRP6 Rabbit mAb
Host Species	Rabbit
Clonality	Monoclonal
Isotype	Rabbit IgG
Purification	Affinity-chromatography
Applications	WB ICC/IF FC
Species Reactivity	Human Mouse Rat
Specificity	LRP6 Antibody detects endogenous levels of total LRP6
Immunogen Description	A synthesized peptide derived from human LRP6
Other Names	LRP6;
Accession No.	Uniprot:O75581
Uniprot	O75581
Calculated MW	180-230kDa
Formulation	Rabbit IgG in phosphate buffered saline , pH 7.4, 150mM NaCl, 0.02% sodium azide and 50% glycerol.
Storage	Store at +4 Λ C short term. Store at -20 Λ C long term. Avoid freeze / thaw cycle.

Application Details

WB:1:500~1:2000ICC/IF:1:50~1:200FC:1:50

Images



Western blot analysis of LRP6 expression in Jurkat cell lysate.

Product Description

Component of the Wnt-Fzd-LRP5-LRP6 complex that triggers beta-catenin signaling through inducing aggregation of receptor-ligand complexes into ribosome-sized signalsomes. Cell-surface coreceptor of Wnt/beta-catenin signaling, which plays a pivotal role in bone formation.

Note: This product is for in vitro research use only