

## GDF3 Rabbit mAb

Catalog No: #56498

Package Size: #56498-1 50ul #56498-2 100ul

Orders: [order@signalwayantibody.com](mailto:order@signalwayantibody.com)Support: [tech@signalwayantibody.com](mailto:tech@signalwayantibody.com)

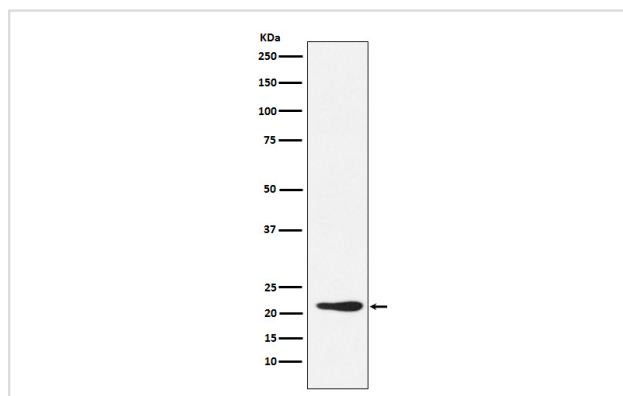
## Description

Product Name	GDF3 Rabbit mAb
Host Species	Rabbit
Clonality	Monoclonal
Isotype	Rabbit IgG
Purification	Affinity-chromatography
Applications	WB
Species Reactivity	Human Mouse Rat
Specificity	GDF3 Antibody detects endogenous levels of total GDF3
Immunogen Description	A synthesized peptide derived from human GDF3
Other Names	ecat9; GDF3; KFS3; MCOP7; Vgr2;
Accession No.	Uniprot:Q9NR23
Uniprot	Q9NR23
Calculated MW	16/41kDa
Formulation	Rabbit IgG in phosphate buffered saline , pH 7.4, 150mM NaCl, 0.02% sodium azide and 50% glycerol.
Storage	Store at +4 $\Lambda$ C short term. Store at -20 $\Lambda$ C long term. Avoid freeze / thaw cycle.

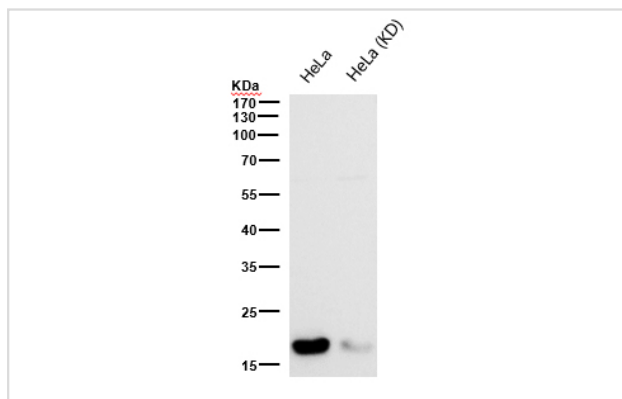
## Application Details

WB:1:500~1:2000

## Images



Western blot analysis of GDF3 expression in 293T cell lysate.



All lanes use the Antibody at 1:1K dilution for 1 hour at room temperature.

## Product Description

Growth factor involved in early embryonic development and adipose-tissue homeostasis. During embryogenesis controls formation of anterior visceral endoderm and mesoderm and the establishment of anterior-posterior identity through a receptor complex comprising the receptor ACVR1B and the coreceptor TDGF1/Cripto (By similarity).

Note: This product is for in vitro research use only