

# Hex Rabbit mAb

Catalog No: #56503



Package Size: #56503-1 50ul #56503-2 100ul

Orders: [order@signalwayantibody.com](mailto:order@signalwayantibody.com)  
Support: [tech@signalwayantibody.com](mailto:tech@signalwayantibody.com)

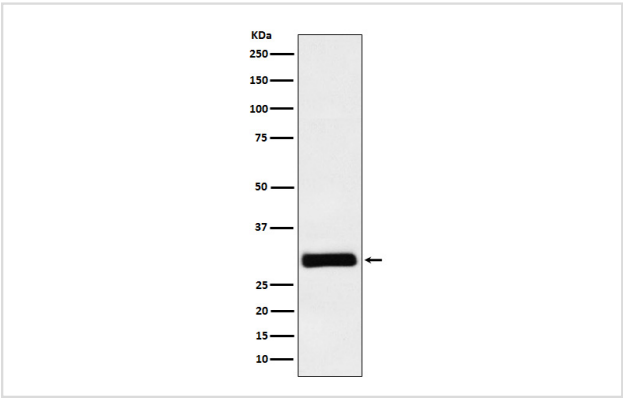
## Description

Product Name	Hex Rabbit mAb
Host Species	Rabbit
Clonality	Monoclonal
Isotype	Rabbit IgG
Purification	Affinity-chromatography
Applications	WB IP
Species Reactivity	Human
Specificity	Hex Antibody detects endogenous levels of total Hex
Immunogen Description	A synthesized peptide derived from human Hex
Other Names	HEX; HHEX; HMPH; PRH; PRHX;
Accession No.	Uniprot:Q03014
Uniprot	Q03014
Calculated MW	30kDa
Formulation	Rabbit IgG in phosphate buffered saline , pH 7.4, 150mM NaCl, 0.02% sodium azide and 50% glycerol.
Storage	Store at +4Λ C short term. Store at -20Λ C long term. Avoid freeze / thaw cycle.

## Application Details

WB:1:500~1:2000IP:1:40

## Images



Western blot analysis of Hex expression in K562 cell lysate.

## Product Description

Recognizes the DNA sequence 5'-ATTAA-3'. Transcriptional repressor. May play a role in hematopoietic differentiation. Establishes anterior identity at two levels; acts early to enhance canonical WNT-signaling by repressing expression of TLE4, and acts later to inhibit NODAL-signaling by directly targeting NODAL.

---

Note: This product is for in vitro research use only