

SEC61A Rabbit mAb

Catalog No: #56508

Package Size: #56508-1 50ul #56508-2 100ul

Orders: order@signalwayantibody.com

Support: tech@signalwayantibody.com

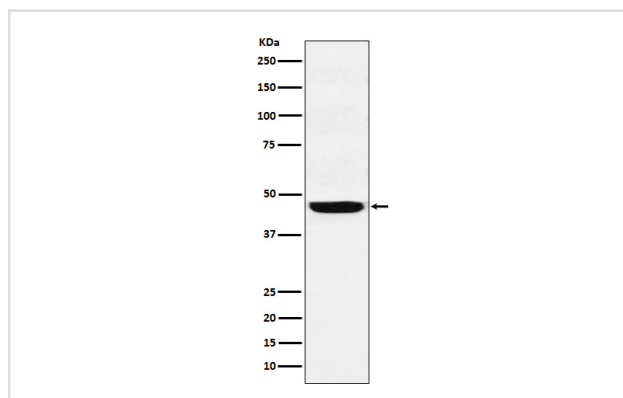
Description

Product Name	SEC61A Rabbit mAb
Host Species	Rabbit
Clonality	Monoclonal
Isotype	Rabbit IgG
Purification	Affinity-chromatography
Applications	WB IHC ICC/IF IP FC
Species Reactivity	Human Mouse Rat
Specificity	SEC61A Antibody detects endogenous levels of total SEC61A
Immunogen Description	A synthesized peptide derived from human SEC61A
Other Names	fb62c11; HSEC61; SEC 61; SEC 61A; Sec61 alpha 1; SEC61; SEC61A1;
Accession No.	Uniprot:Q9H9S3
Uniprot	Q9H9S3
Calculated MW	48kDa
Formulation	Rabbit IgG in phosphate buffered saline , pH 7.4, 150mM NaCl, 0.02% sodium azide and 50% glycerol.
Storage	Store at +4ℳ C short term. Store at -20ℳ C long term. Avoid freeze / thaw cycle.

Application Details

WB:1:500~1:2000IHC:1:50~1:200ICC/IF:1:50~1:200IP:1:50FC:1:80

Images



Western blot analysis of SEC61A expression in A431 cell lysate.

Product Description

Plays a crucial role in the insertion of secretory and membrane polypeptides into the ER. Required for assembly of membrane and secretory proteins. Tightly associated with membrane-bound ribosomes, either directly or through adapter proteins.

Note: This product is for in vitro research use only