

## SAM68 Rabbit mAb

Catalog No: #56521

Package Size: #56521-1 50ul #56521-2 100ul

Orders: [order@signalwayantibody.com](mailto:order@signalwayantibody.com)Support: [tech@signalwayantibody.com](mailto:tech@signalwayantibody.com)

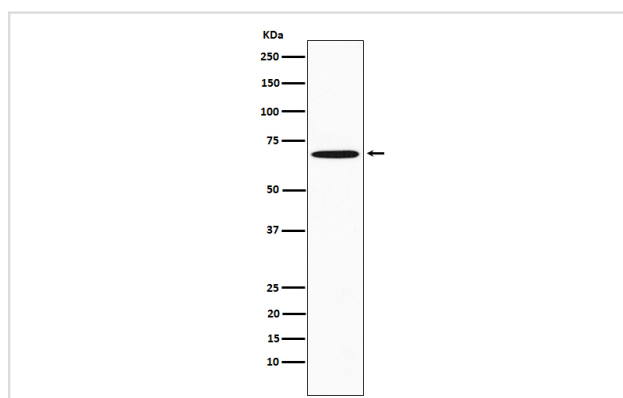
## Description

Product Name	SAM68 Rabbit mAb
Host Species	Rabbit
Clonality	Monoclonal
Isotype	Rabbit IgG
Purification	Affinity-chromatography
Applications	WB IHC ICC/IF
Species Reactivity	Human Mouse Rat
Specificity	SAM68 Antibody detects endogenous levels of total SAM68
Immunogen Description	A synthesized peptide derived from human SAM68
Other Names	Khdrbs1; p62; p68; Sam68;
Accession No.	Uniprot:Q07666
Uniprot	Q07666
Calculated MW	68 kDa
Formulation	Rabbit IgG in phosphate buffered saline , pH 7.4, 150mM NaCl, 0.02% sodium azide and 50% glycerol.
Storage	Store at +4ℳ C short term. Store at -20ℳ C long term. Avoid freeze / thaw cycle.

## Application Details

WB:1:500~1:2000IHC:1:50~1:200ICC/IF

## Images



Western blot analysis of SAM68 expression in Jurkat cell lysate.

## Product Description

Recruited and tyrosine phosphorylated by several receptor systems, for example the T-cell, leptin and insulin receptors. Once phosphorylated, functions as an adapter protein in signal transduction cascades by binding to SH2 and SH3 domain-containing proteins.

---

Note: This product is for in vitro research use only