

AP2S1 Rabbit mAb

Catalog No: #56525

Package Size: #56525-1 50ul #56525-2 100ul

Orders: order@signalwayantibody.comSupport: tech@signalwayantibody.com

Description

Product Name	AP2S1 Rabbit mAb
Host Species	Rabbit
Clonality	Monoclonal
Isotype	Rabbit IgG
Purification	Affinity-chromatography
Applications	WB IP FC
Species Reactivity	Human Mouse Rat
Specificity	AP2S1 Antibody detects endogenous levels of total AP2S1
Immunogen Description	A synthesized peptide derived from human AP2S1
Other Names	AP17; AP17 delta; Ap2s1; CLAPS2; Sigma2 adaptin;
Accession No.	Uniprot:P53680
Uniprot	P53680
Calculated MW	17 kDa
Formulation	Rabbit IgG in phosphate buffered saline , pH 7.4, 150mM NaCl, 0.02% sodium azide and 50% glycerol.
Storage	Store at +4Λ C short term. Store at -20Λ C long term. Avoid freeze / thaw cycle.

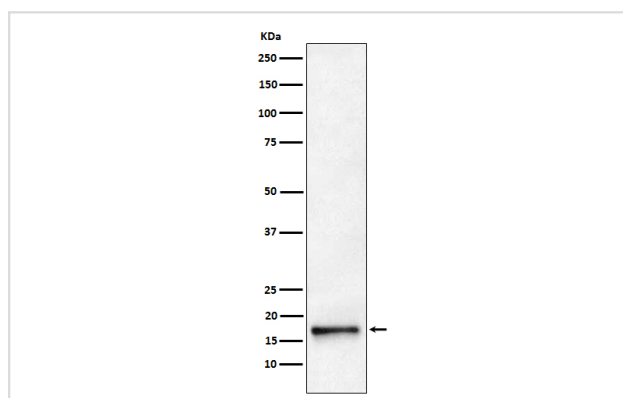
Application Details

WB:1:500~1:2000

IP:1:50

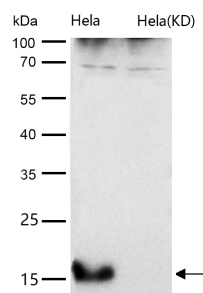
FC:1:50

Images



Western blot analysis of AP2S1 expression in HeLa cell lysate.

All lanes use the Antibody at 1:1K dilution for 1 hour at room temperature.



Product Description

Component of the adaptor protein complex 2 (AP-2). Adaptor protein complexes function in protein Transport via Transport vesicles in different membrane traffic pathways. Adaptor protein complexes are vesicle coat components and appear to be involved in cargo selection and vesicle formation.

Note: This product is for in vitro research use only