

Apolipoprotein F Rabbit mAb

Catalog No: #56532

Package Size: #56532-1 50ul #56532-2 100ul

Orders: order@signalwayantibody.com

Support: tech@signalwayantibody.com

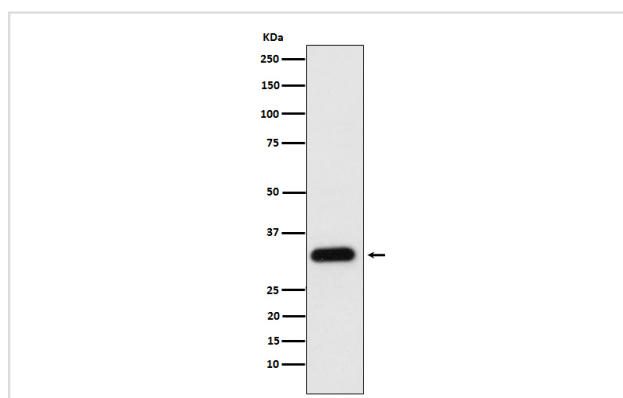
Description

Product Name	Apolipoprotein F Rabbit mAb
Host Species	Rabbit
Clonality	Monoclonal
Isotype	Rabbit IgG
Purification	Affinity-chromatography
Applications	WB ICC
Species Reactivity	Human
Specificity	Apolipoprotein F Antibody detects endogenous levels of total Apolipoprotein F
Immunogen Description	A synthesized peptide derived from human Apolipoprotein F
Other Names	ApoF; Apolipoprotein F; LTIP;
Accession No.	Uniprot:Q13790
Uniprot	Q13790
Calculated MW	33 kDa
Formulation	Rabbit IgG in phosphate buffered saline , pH 7.4, 150mM NaCl, 0.02% sodium azide and 50% glycerol.
Storage	Store at +4ℳ C short term. Store at -20ℳ C long term. Avoid freeze / thaw cycle.

Application Details

WB:1:500~1:2000ICC/IF:1:50~1:200

Images



Western blot analysis of Apolipoprotein F expression in human plasma cell lysate.

Product Description

Minor apolipoprotein that associates with LDL. Inhibits cholesteryl ester transfer protein (CETP) activity and appears to be an important regulator of cholesterol transport. Also associates to a lesser degree with VLDL, Apo-AI and Apo-AII.

Note: This product is for in vitro research use only