

## Calpain small subunit 1 Rabbit mAb

Catalog No: #56533

Package Size: #56533-1 50ul #56533-2 100ul

Orders: order@signalwayantibody.com

Support: tech@signalwayantibody.com

## Description

Product Name	Calpain small subunit 1 Rabbit mAb
Host Species	Rabbit
Clonality	Monoclonal
Isotype	Rabbit IgG
Purification	Affinity-chromatography
Applications	WB IHC ICC FC
Species Reactivity	Human Mouse Rat
Specificity	Calpain small subunit 1 Antibody detects endogenous levels of total Calpain small subunit 1
Immunogen Description	A synthesized peptide derived from human Calpain small subunit 1
Other Names	Calpain4; CalpainS1; CANP; CANPS; CAPN4; CAPNS; Capns1; CDPS; CSS1;
Accession No.	Uniprot:P04632
Uniprot	P04632
Calculated MW	28 kDa
Formulation	Rabbit IgG in phosphate buffered saline , pH 7.4, 150mM NaCl, 0.02% sodium azide and 50% glycerol.
Storage	Store at +4 $\Lambda$ C short term. Store at -20 $\Lambda$ C long term. Avoid freeze / thaw cycle.

## Application Details

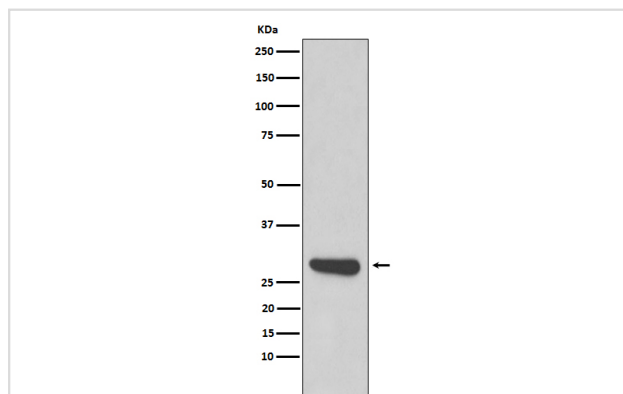
WB:1:500~1:2000

IHC:1:50~1:200

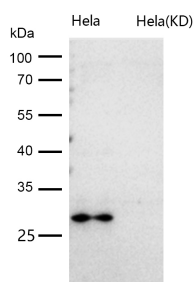
ICC/IF:1:50~1:200

FC:1:50

## Images



Western blot analysis of Calpain small subunit 1 expression in 293T cell lysate.



All lanes use the Antibody at 1:1K dilution for 1 hour at room temperature.

## Product Description

Regulatory subunit of the calcium-regulated non-lysosomal thiol-protease which catalyzes limited proteolysis of substrates involved in cytoskeletal remodeling and signal transduction.

Note: This product is for in vitro research use only