

## TCP1 alpha Rabbit mAb

Catalog No: #56543

Package Size: #56543-1 50ul #56543-2 100ul

Orders: order@signalwayantibody.com

Support: tech@signalwayantibody.com

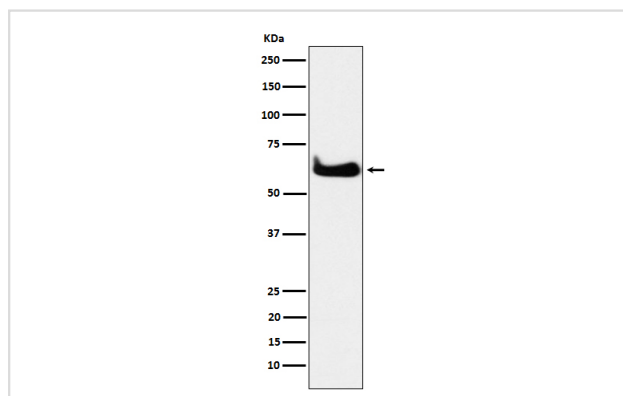
## Description

Product Name	TCP1 alpha Rabbit mAb
Host Species	Rabbit
Clonality	Monoclonal
Isotype	Rabbit IgG
Purification	Affinity-chromatography
Applications	WB IHC ICC/IF IP
Species Reactivity	Human
Specificity	TCP1 alpha Antibody detects endogenous levels of total TCP1 alpha
Immunogen Description	A synthesized peptide derived from human TCP1 alpha
Other Names	CCT alpha; CCT; CCT1; Ccta; p63; TCP 1 alpha; TCP1 Tp63; TRic;
Accession No.	Uniprot:P17987
Uniprot	P17987
Calculated MW	60 kDa
Formulation	Rabbit IgG in phosphate buffered saline , pH 7.4, 150mM NaCl, 0.02% sodium azide and 50% glycerol.
Storage	Store at +4ℳ C short term. Store at -20ℳ C long term. Avoid freeze / thaw cycle.

## Application Details

WB:1:500~1:2000IHC:1:50~1:200ICC/IF:1:50~1:200IP:1:50

## Images



Western blot analysis of TCP1 alpha expression in HeLa cell lysate.

## Product Description

Molecular chaperone; assists the folding of proteins upon ATP hydrolysis. As part of the BBS/CCT complex may play a role in the assembly of BBSome, a complex involved in ciliogenesis regulating transports vesicles to the cilia. Known to play a role, in vitro, in the folding of actin and tubulin.

---

Note: This product is for in vitro research use only