

## PSMD14 Rabbit mAb

Catalog No: #56546

Package Size: #56546-1 50ul #56546-2 100ul

Orders: order@signalwayantibody.com

Support: tech@signalwayantibody.com

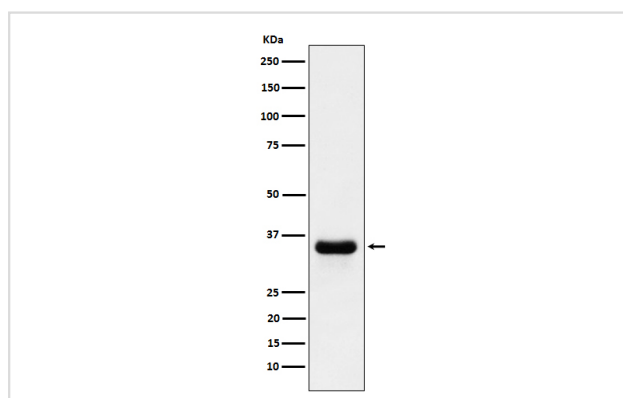
## Description

Product Name	PSMD14 Rabbit mAb
Host Species	Rabbit
Clonality	Monoclonal
Isotype	Rabbit IgG
Purification	Affinity-chromatography
Applications	WB IHC ICC/IF
Species Reactivity	Human Mouse Rat
Specificity	PSMD14 Antibody detects endogenous levels of total PSMD14
Immunogen Description	A synthesized peptide derived from human PSMD14
Other Names	26S proteasome non-ATPase regulatory subunit 14; PAD1; POH1; Psmd14; RPN11;
Accession No.	Uniprot:O00487
Uniprot	O00487
Calculated MW	35 kDa
Formulation	Rabbit IgG in phosphate buffered saline , pH 7.4, 150mM NaCl, 0.02% sodium azide and 50% glycerol.
Storage	Store at +4ℳ C short term. Store at -20ℳ C long term. Avoid freeze / thaw cycle.

## Application Details

WB:1:500~1:2000IHC:1:50~1:200ICC/IF:1:50~1:200

## Images



Western blot analysis of PSMD14 expression in HeLa cell lysate.

## Product Description

Metalloprotease component of the 26S proteasome that specifically cleaves 'Lys-63'-linked polyubiquitin chains. The 26S proteasome is involved in the ATP-dependent degradation of ubiquitinated proteins. The function of the 'Lys-63'-specific deubiquitination of the proteasome is unclear.

---

Note: This product is for in vitro research use only