

Lactoferrin Rabbit mAb

Catalog No: #56552

Package Size: #56552-1 50ul #56552-2 100ul

Orders: order@signalwayantibody.com

Support: tech@signalwayantibody.com

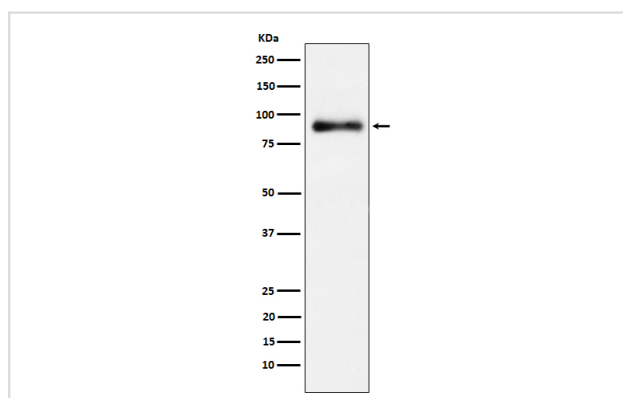
Description

Product Name	Lactoferrin Rabbit mAb
Host Species	Rabbit
Clonality	Monoclonal
Isotype	Rabbit IgG
Purification	Affinity-chromatography
Applications	WB ICC/IF IP
Species Reactivity	Human
Specificity	Lactoferrin Antibody detects endogenous levels of total Lactoferrin
Immunogen Description	A synthesized peptide derived from human Lactoferrin
Other Names	GIG12; HLF2; Kaliocin 1; Lactoferrin; Lactotransferrin; LTF; Neutrophil lactoferrin; Talalactoferrin;
Accession No.	Uniprot:P02788
Uniprot	P02788
Calculated MW	85kDa
Formulation	Rabbit IgG in phosphate buffered saline , pH 7.4, 150mM NaCl, 0.02% sodium azide and 50% glycerol.
Storage	Store at +4 Λ C short term. Store at -20 Λ C long term. Avoid freeze / thaw cycle.

Application Details

WB:1:500~1:2000ICC/IF:1:50~1:200IP:1:50

Images



Western blot analysis of Lactoferrin expression in HeLa cell lysate.

Product Description

Transferrins are iron binding transport proteins which can bind two Fe(3+) ions in association with the binding of an anion, usually bicarbonate.

Note: This product is for in vitro research use only