

MBD2 Rabbit mAb

Catalog No: #56553

Package Size: #56553-1 50ul #56553-2 100ul

Orders: order@signalwayantibody.comSupport: tech@signalwayantibody.com

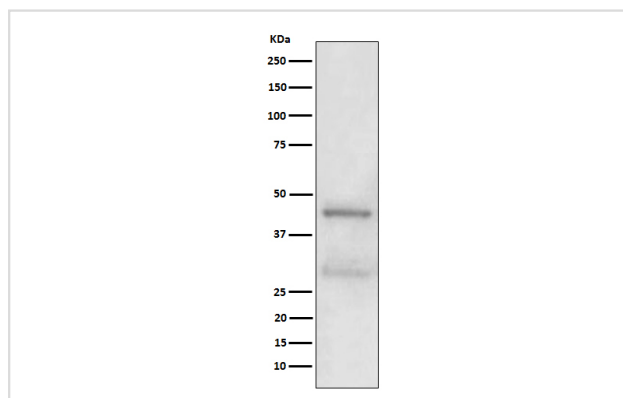
Description

Product Name	MBD2 Rabbit mAb
Host Species	Rabbit
Clonality	Monoclonal
Isotype	Rabbit IgG
Purification	Affinity-chromatography
Applications	WB IHC ICC/IF
Species Reactivity	Human
Specificity	MBD2 Antibody detects endogenous levels of total MBD2
Immunogen Description	A synthesized peptide derived from human MBD2
Other Names	Demethylase; DMTase; Mbd2; MBD2a;
Accession No.	Uniprot:Q9UBB5
Uniprot	Q9UBB5
Calculated MW	43/32/29KDa
Formulation	Rabbit IgG in phosphate buffered saline , pH 7.4, 150mM NaCl, 0.02% sodium azide and 50% glycerol.
Storage	Store at +4ℳ C short term. Store at -20ℳ C long term. Avoid freeze / thaw cycle.

Application Details

WB:1:500~1:2000IHC:1:50~1:200ICC/IF:1:50~1:200

Images



Western blot analysis of MBD2 expression in A431 cell lysate.

Product Description

Binds CpG islands in promoters where the DNA is methylated at position 5 of cytosine within CpG dinucleotides. Binds hemimethylated DNA as well. Recruits histone deacetylases and DNA methyltransferases. Acts as transcriptional repressor and plays a role in gene silencing.

Note: This product is for in vitro research use only