

CD16 Rabbit mAb

Catalog No: #56554

Package Size: #56554-1 50ul #56554-2 100ul

Orders: order@signalwayantibody.com

Support: tech@signalwayantibody.com

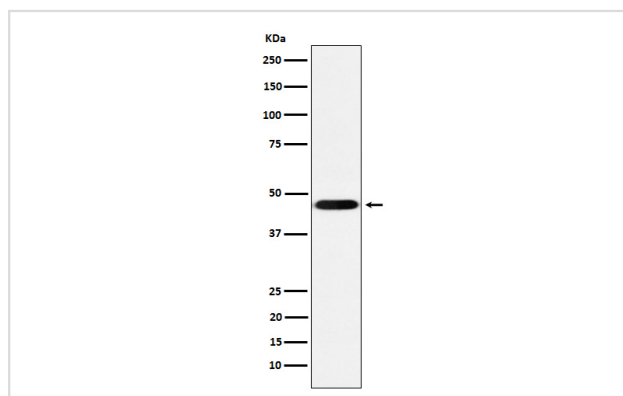
Description

Product Name	CD16 Rabbit mAb
Host Species	Rabbit
Clonality	Monoclonal
Clone No.	SR1704
Isotype	Rabbit IgG
Purification	Affinity-chromatography
Applications	WB ICC/IF FC
Species Reactivity	Human Mouse Rat
Specificity	CD16 Antibody detects endogenous levels of total CD16
Immunogen Description	A synthesized peptide derived from human CD16
Other Names	IGFR3; CD16; CD16a; IMD20;
Accession No.	Uniprot:P08637
Uniprot	P08637
Calculated MW	42kDa
Formulation	Rabbit IgG in phosphate buffered saline , pH 7.4, 150mM NaCl, 0.02% sodium azide and 50% glycerol.
Storage	Store at +4ℳ C short term. Store at -20ℳ C long term. Avoid freeze / thaw cycle.

Application Details

WB:1:500~1:2000ICC/IF:1:50~1:200FC:1:50

Images



Western blot analysis of CD16 expression in THP-1 cell lysate.

Product Description

Receptor for the Fc region of IgG. Binds complexed or aggregated IgG and also monomeric IgG. Mediates antibody-dependent cellular cytotoxicity (ADCC) and other antibody-dependent responses, such as phagocytosis.

Note: This product is for in vitro research use only