

## SorLA Rabbit mAb

Catalog No: #56560

Package Size: #56560-1 50ul #56560-2 100ul

Orders: [order@signalwayantibody.com](mailto:order@signalwayantibody.com)Support: [tech@signalwayantibody.com](mailto:tech@signalwayantibody.com)

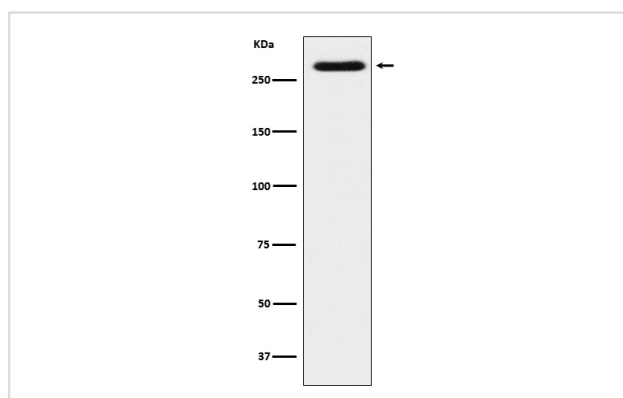
## Description

Product Name	SorLA Rabbit mAb
Host Species	Rabbit
Clonality	Monoclonal
Isotype	Rabbit IgG
Purification	Affinity-chromatography
Applications	WB IHC
Species Reactivity	Human Mouse Rat
Specificity	SorLA Antibody detects endogenous levels of total SorLA
Immunogen Description	A synthesized peptide derived from human SorLA
Other Names	gp250; LR11; LRP9; SORL1; SorLA 1; SorLA;
Accession No.	Uniprot:Q92673
Uniprot	Q92673
Calculated MW	270kDa
Formulation	Rabbit IgG in phosphate buffered saline , pH 7.4, 150mM NaCl, 0.02% sodium azide and 50% glycerol.
Storage	Store at +4ℳ C short term. Store at -20ℳ C long term. Avoid freeze / thaw cycle.

## Application Details

WB:1:500~1:2000IHC:1:100~1:500

## Images



Western blot analysis of SorLA expression in SH-SY5Y cell lysate.

## Product Description

Likely to be a multifunctional endocytic receptor, that may be implicated in the uptake of lipoproteins and of proteases. Binds LDL, the major cholesterol-carrying lipoprotein of plasma, and transports it into cells by endocytosis. Binds the receptor-associated protein (RAP). Could play a role in cell-cell interaction.

---

Note: This product is for in vitro research use only