

PSMA3 Rabbit mAb

Catalog No: #56578

Package Size: #56578-1 50ul #56578-2 100ul

Orders: order@signalwayantibody.com

Support: tech@signalwayantibody.com

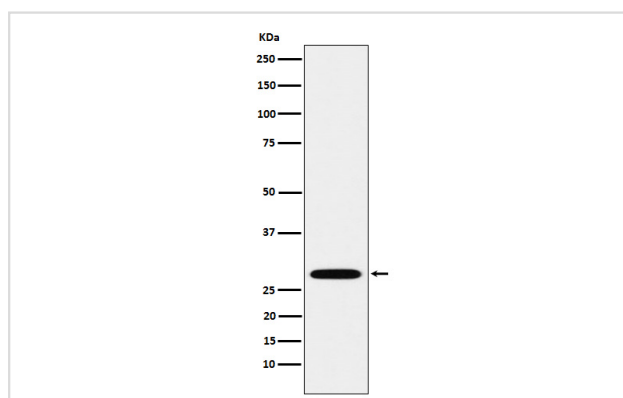
Description

Product Name	PSMA3 Rabbit mAb
Host Species	Rabbit
Clonality	Monoclonal
Isotype	Rabbit IgG
Purification	Affinity-chromatography
Applications	WB IHC ICC/IF IP
Species Reactivity	Human Mouse Rat
Specificity	PSMA3 Antibody detects endogenous levels of total PSMA3
Immunogen Description	A synthesized peptide derived from human PSMA3
Other Names	HC8; Proteasome component C8; PSC8; psmA3;
Accession No.	Uniprot:P25788
Uniprot	P25788
Calculated MW	28kDa
Formulation	Rabbit IgG in phosphate buffered saline , pH 7.4, 150mM NaCl, 0.02% sodium azide and 50% glycerol.
Storage	Store at +4ℳ C short term. Store at -20ℳ C long term. Avoid freeze / thaw cycle.

Application Details

WB:1:500~1:2000IHC:1:50~1:200ICC/IF:1:50~1:200IP:1:50

Images



Western blot analysis of PSMA3 expression in A549 cell lysate.

Product Description

The proteasome is a multicatalytic proteinase complex which is characterized by its ability to cleave peptides with Arg, Phe, Tyr, Leu, and Glu adjacent to the leaving group at neutral or slightly basic pH.

Note: This product is for in vitro research use only