

## Aly Rabbit mAb

Catalog No: #56585

Package Size: #56585-1 50ul #56585-2 100ul

Orders: [order@signalwayantibody.com](mailto:order@signalwayantibody.com)Support: [tech@signalwayantibody.com](mailto:tech@signalwayantibody.com)

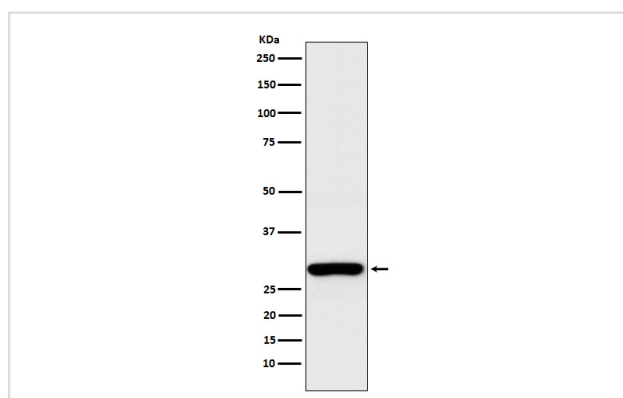
## Description

|                       |  |
|-----------------------|--|
| Product Name          | Aly Rabbit mAb   |
| Host Species          | Rabbit   |
| Clonality             | Monoclonal   |
| Isotype               | Rabbit IgG   |
| Purification          | Affinity-chromatography  |
| Applications          | WB IHC ICC/IF IP FC  |
| Species Reactivity    | Human Mouse Rat  |
| Specificity           | Aly Antibody detects endogenous levels of total Aly  |
| Immunogen Description | A synthesized peptide derived from human Aly   |
| Other Names           | ALY; ALY/REF; BEF; REF; Tho4; thoc4;   |
| Accession No.         | Uniprot:Q86V81   |
| Uniprot               | Q86V81   |
| Calculated MW         | 27kDa  |
| Formulation           | Rabbit IgG in phosphate buffered saline , pH 7.4, 150mM NaCl, 0.02% sodium azide and 50% glycerol. |
| Storage               | Store at +4ℳ C short term. Store at -20ℳ C long term. Avoid freeze / thaw cycle.                   |

## Application Details

WB:1:500~1:2000IHC:1:50~1:200ICC/IF:1:50~1:200IP:1:40FC:1:100

## Images



Western blot analysis of Aly expression in HEK293 cell lysate.

## Product Description

Component of the THO subcomplex of the TREX complex. The TREX complex specifically associates with spliced mRNA and not with unspliced pre-mRNA. It is recruited to spliced mRNAs by a transcription-independent mechanism. Binds to mRNA upstream of the exon-junction complex (EJC) and is recruited in a splicing- and cap-dependent manner to a region near the 5' end of the mRNA where it functions in mRNA export.

---

Note: This product is for in vitro research use only