

SPINK1 Rabbit mAb

Catalog No: #56587

Package Size: #56587-1 50ul #56587-2 100ul

Orders: order@signalwayantibody.com

Support: tech@signalwayantibody.com

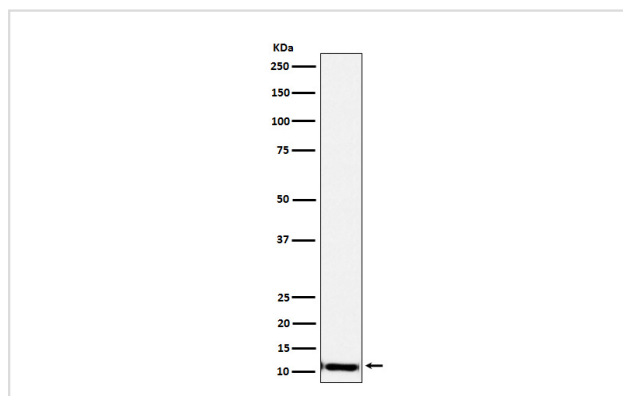
Description

Product Name	SPINK1 Rabbit mAb
Host Species	Rabbit
Clonality	Monoclonal
Isotype	Rabbit IgG
Purification	Affinity-chromatography
Applications	WB IHC
Species Reactivity	Human
Specificity	SPINK1 Antibody detects endogenous levels of total SPINK1
Immunogen Description	A synthesized peptide derived from human SPINK1
Other Names	PCTT; PSTI; SPINK1; Spink3; TaTI; TCP;
Accession No.	Uniprot:P00995
Uniprot	P00995
Calculated MW	11kDa
Formulation	Rabbit IgG in phosphate buffered saline , pH 7.4, 150mM NaCl, 0.02% sodium azide and 50% glycerol.
Storage	Store at +4ℳ C short term. Store at -20ℳ C long term. Avoid freeze / thaw cycle.

Application Details

WB:1:500~1:2000IHC:1:50~1:200

Images



Western blot analysis of SPINK1 expression in Human pancreas lysate.

Product Description

Serine protease inhibitor which exhibits anti-trypsin activity (PubMed:7142173). In the pancreas, protects against trypsin-catalyzed premature activation of zymogens.

Note: This product is for in vitro research use only