

## CPEB1 Rabbit mAb

Catalog No: #56596

Package Size: #56596-1 50ul #56596-2 100ul

Orders: order@signalwayantibody.com

Support: tech@signalwayantibody.com

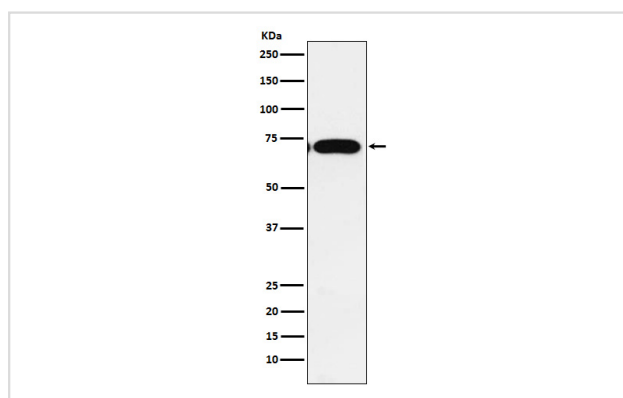
## Description

Product Name	CPEB1 Rabbit mAb
Host Species	Rabbit
Clonality	Monoclonal
Isotype	Rabbit IgG
Purification	Affinity-chromatography
Applications	WB IP
Species Reactivity	Human
Specificity	CPEB1 Antibody detects endogenous levels of total CPEB1
Immunogen Description	A synthesized peptide derived from human CPEB1
Other Names	CEBP; CPE-BP1; CPEB1; h CEBP; hCPEB 1;
Accession No.	Uniprot:Q9BZB8
Uniprot	Q9BZB8
Calculated MW	70kDa
Formulation	Rabbit IgG in phosphate buffered saline , pH 7.4, 150mM NaCl, 0.02% sodium azide and 50% glycerol.
Storage	Store at +4Λ C short term. Store at -20Λ C long term. Avoid freeze / thaw cycle.

## Application Details

WB:1:500~1:2000IP:1:50

## Images



Western blot analysis of CPEB1 expression in A549 cell lysate.

## Product Description

Sequence-specific RNA-binding protein that regulates mRNA cytoplasmic polyadenylation and translation initiation during oocyte maturation, early development and at postsynapse sites of neurons. Binds to the cytoplasmic polyadenylation element (CPE), an uridine-rich sequence element (consensus sequence 5'-UUUUUAU-3') within the mRNA 3'-UTR.

---

Note: This product is for in vitro research use only