

COPA Rabbit mAb

Catalog No: #56599

Package Size: #56599-1 50ul #56599-2 100ul

Orders: order@signalwayantibody.com

Support: tech@signalwayantibody.com

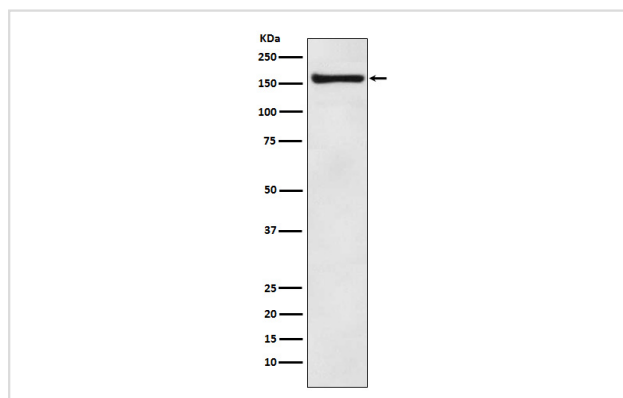
Description

Product Name	COPA Rabbit mAb
Host Species	Rabbit
Clonality	Monoclonal
Isotype	Rabbit IgG
Purification	Affinity-chromatography
Applications	WB IHC
Species Reactivity	Human Mouse Rat
Specificity	COPA Antibody detects endogenous levels of total COPA
Immunogen Description	A synthesized peptide derived from human COPA
Other Names	Alpha COP; Alpha COPI; AlphaCOP; COP A; copA; HEP COP; Proxenin; Xenin;
Accession No.	Uniprot:P53621
Uniprot	P53621
Calculated MW	138kDa
Formulation	Rabbit IgG in phosphate buffered saline , pH 7.4, 150mM NaCl, 0.02% sodium azide and 50% glycerol.
Storage	Store at +4ℳ C short term. Store at -20ℳ C long term. Avoid freeze / thaw cycle.

Application Details

WB:1:1000~1:5000IHC:1:50~1:200

Images



Western blot analysis of COPA expression in MCF7 cell lysate.

Product Description

The coatamer is a cytosolic protein complex that binds to dilysine motifs and reversibly associates with Golgi non-clathrin-coated vesicles, which further mediate biosynthetic protein transport from the ER, via the Golgi up to the trans Golgi network.

Note: This product is for in vitro research use only