

ROR beta Rabbit mAb

Catalog No: #56601

Package Size: #56601-1 50ul #56601-2 100ul

Orders: order@signalwayantibody.comSupport: tech@signalwayantibody.com

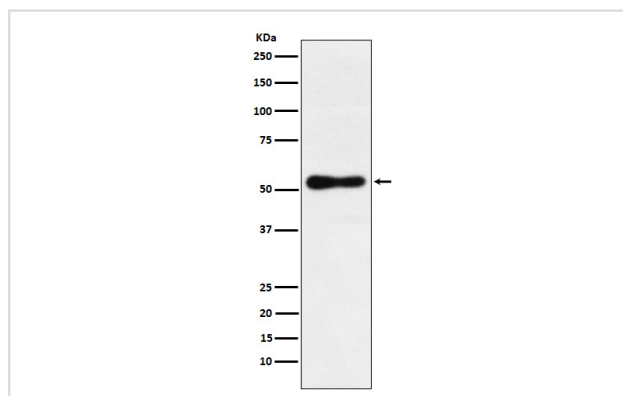
Description

Product Name	ROR beta Rabbit mAb
Host Species	Rabbit
Clonality	Monoclonal
Isotype	Rabbit IgG
Purification	Affinity-chromatography
Applications	WB
Species Reactivity	Human Mouse
Specificity	ROR beta Antibody detects endogenous levels of total ROR beta
Immunogen Description	A synthesized peptide derived from human ROR beta
Other Names	NR1F2; ROR BETA; Rorb; RZR BETA; RZRB;
Accession No.	Uniprot:Q92753
Uniprot	Q92753
Calculated MW	53kDa
Formulation	Rabbit IgG in phosphate buffered saline , pH 7.4, 150mM NaCl, 0.02% sodium azide and 50% glycerol.
Storage	Store at +4ℳ C short term. Store at -20ℳ C long term. Avoid freeze / thaw cycle.

Application Details

WB:1:500~1:2000

Images



Western blot analysis of ROR beta expression in HepG2 cell lysate.

Product Description

Orphan nuclear receptor required for normal postnatal development of rod and cone photoreceptor cells. Regulates transcription of OPN1SW in cone photoreceptor cells by binding the sequence 5'-AGGTCA-3' in the OPN1SW promoter.

Note: This product is for in vitro research use only