

PSAP Rabbit mAb

Catalog No: #56735

Package Size: #56735-1 50ul #56735-2 100ul

Orders: order@signalwayantibody.com

Support: tech@signalwayantibody.com

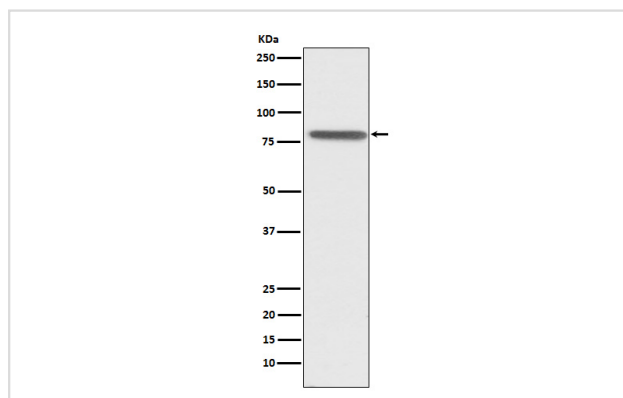
Description

Product Name	PSAP Rabbit mAb
Host Species	Rabbit
Clonality	Monoclonal
Isotype	Rabbit IgG
Purification	Affinity-chromatography
Applications	WB IHC
Species Reactivity	Human
Specificity	PSAP Antibody detects endogenous levels of total PSAP
Immunogen Description	A synthesized peptide derived from human PSAP
Other Names	GLBA; SAP1; Saposins; Dispersin;
Accession No.	Uniprot:P07602
Uniprot	P07602
Calculated MW	78kDa
Formulation	Rabbit IgG in phosphate buffered saline , pH 7.4, 150mM NaCl, 0.02% sodium azide and 50% glycerol.
Storage	Store at +4ℳ C short term. Store at -20ℳ C long term. Avoid freeze / thaw cycle.

Application Details

WB:1:1000~1:5000IHC:1:50~1:200

Images



Western blot analysis of PSAP expression in HepG2 cell lysate.

Product Description

The lysosomal degradation of sphingolipids takes place by the sequential action of specific hydrolases. Some of these enzymes require specific low-molecular mass, non-enzymic proteins: the sphingolipids activator proteins (coproteins).

Note: This product is for in vitro research use only