

## ATP7b Rabbit mAb

Catalog No: #56752

Package Size: #56752-1 50ul #56752-2 100ul

Orders: [order@signalwayantibody.com](mailto:order@signalwayantibody.com)Support: [tech@signalwayantibody.com](mailto:tech@signalwayantibody.com)

## Description

|                       |  |
|-----------------------|--|
| Product Name          | ATP7b Rabbit mAb   |
| Host Species          | Rabbit   |
| Clonality             | Monoclonal   |
| Isotype               | Rabbit IgG   |
| Purification          | Affinity-chromatography  |
| Applications          | WB ICC/IF FC   |
| Species Reactivity    | Human  |
| Specificity           | ATP7b Antibody detects endogenous levels of total ATP7b  |
| Immunogen Description | A synthesized peptide derived from human ATP7b   |
| Other Names           | ATP7B; PWD; WC1; WD; WND; WND/140 kDa;   |
| Accession No.         | Uniprot:P35670   |
| Uniprot               | P35670   |
| Calculated MW         | 157kDa   |
| Formulation           | Rabbit IgG in phosphate buffered saline , pH 7.4, 150mM NaCl, 0.02% sodium azide and 50% glycerol. |
| Storage               | Store at +4Λ C short term. Store at -20Λ C long term. Avoid freeze / thaw cycle.                   |

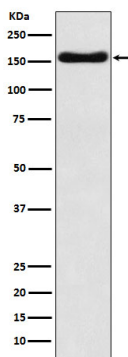
## Application Details

WB:1:500~1:2000

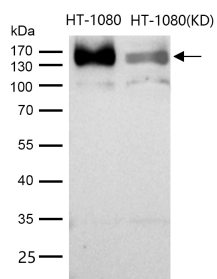
ICC/IF:1:50~1:200

FC:1:50

## Images



Western blot analysis of ATP7b expression in HepG2 cell lysate.



All lanes use the Antibody at 1:1K dilution for 1 hour at room temperature.

## Product Description

Involved in the export of copper out of the cells, such as the efflux of hepatic copper into the bile.

Note: This product is for in vitro research use only