

## CRKII Rabbit mAb

Catalog No: #56755

Package Size: #56755-1 50ul #56755-2 100ul

Orders: [order@signalwayantibody.com](mailto:order@signalwayantibody.com)Support: [tech@signalwayantibody.com](mailto:tech@signalwayantibody.com)

## Description

Product Name	CRKII Rabbit mAb
Host Species	Rabbit
Clonality	Monoclonal
Isotype	Rabbit IgG
Purification	Affinity-chromatography
Applications	WB ICC/IF IP FC
Species Reactivity	Human Mouse Rat
Specificity	CRKII Antibody detects endogenous levels of total CRKII
Immunogen Description	A synthesized peptide derived from human CRKII
Other Names	CRK; CRKII; p38;
Accession No.	Uniprot:P46108
Uniprot	P46108
Calculated MW	38kDa
Formulation	Rabbit IgG in phosphate buffered saline , pH 7.4, 150mM NaCl, 0.02% sodium azide and 50% glycerol.
Storage	Store at +4 $\Lambda$ C short term. Store at -20 $\Lambda$ C long term. Avoid freeze / thaw cycle.

## Application Details

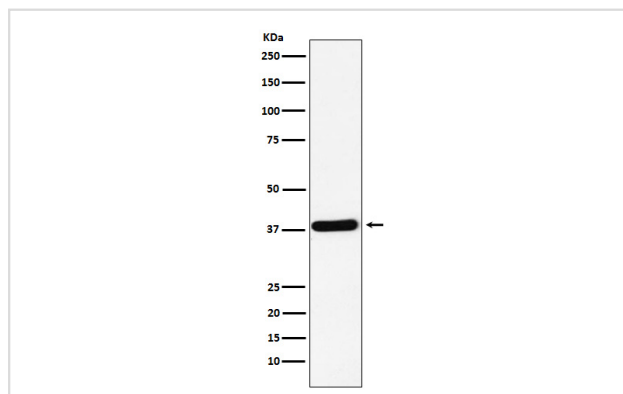
WB:1:500~1:2000

ICC/IF:1:50~1:200

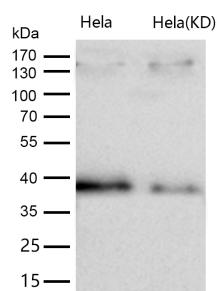
IP:1:50

FC:1:100

## Images



Western blot analysis of CRKII expression in K562 cell lysate.



All lanes use the Antibody at 1:1K dilution for 1 hour at room temperature.

## Product Description

The Crk-I and Crk-II forms differ in their biological activities. Crk-II has less transforming activity than Crk-I. Crk-II mediates attachment-induced MAPK8 activation, membrane ruffling and cell motility in a Rac-dependent manner. Involved in phagocytosis of apoptotic cells and cell motility via its interaction with DOCK1 and DOCK4.

Note: This product is for in vitro research use only