

RGAP1 Rabbit mAb

Catalog No: #56837

Package Size: #56837-1 50ul #56837-2 100ul

Orders: order@signalwayantibody.comSupport: tech@signalwayantibody.com

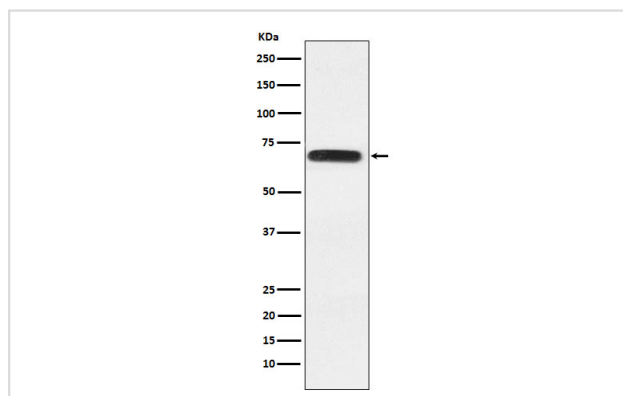
Description

| | |
|-----------------------|--|
| Product Name | RGAP1 Rabbit mAb |
| Host Species | Rabbit |
| Clonality | Monoclonal |
| Isotype | Rabbit IgG |
| Purification | Affinity-chromatography |
| Applications | WB IHC ICC/IF |
| Species Reactivity | Human |
| Specificity | RGAP1 Antibody detects endogenous levels of total RGAP1 |
| Immunogen Description | A synthesized peptide derived from human RGAP1 |
| Other Names | CYK4; GAP; Gap1; ID GAP; MgcRacGAP; Racgap1; |
| Accession No. | Uniprot:Q9H0H5 |
| Uniprot | Q9H0H5 |
| Calculated MW | 71kDa |
| Formulation | Rabbit IgG in phosphate buffered saline , pH 7.4, 150mM NaCl, 0.02% sodium azide and 50% glycerol. |
| Storage | Store at +4 Λ C short term. Store at -20 Λ C long term. Avoid freeze / thaw cycle. |

Application Details

WB:1:500~1:2000IHC:1:50~1:200ICC/IF:1:50~1:200

Images



Western blot analysis of RACGAP1 expression in A431 cell lysate.

Product Description

Component of the centralspindlin complex that serves as a microtubule-dependent and Rho-mediated signaling required for the myosin contractile ring formation during the cell cycle cytokinesis. Plays key roles in controlling cell growth and differentiation of hematopoietic cells through mechanisms other than regulating Rac GTPase activity.

Note: This product is for in vitro research use only