

CC2D1A Rabbit mAb

Catalog No: #56901

Package Size: #56901-1 50ul #56901-2 100ul

Orders: order@signalwayantibody.comSupport: tech@signalwayantibody.com

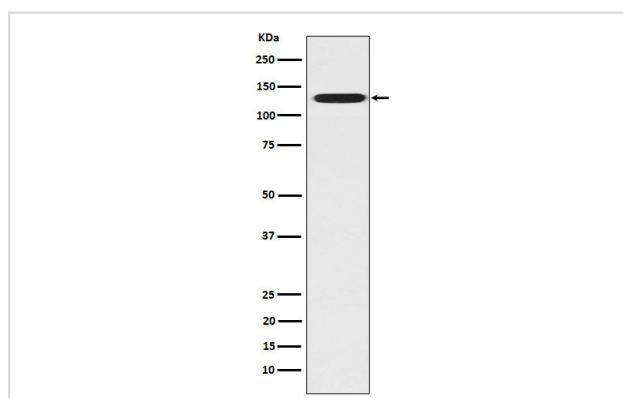
Description

Product Name	CC2D1A Rabbit mAb
Host Species	Rabbit
Clonality	Monoclonal
Isotype	Rabbit IgG
Purification	Affinity-chromatography
Applications	WB ICC/IF FC
Species Reactivity	Human Mouse Rat
Specificity	CC2D1A Antibody detects endogenous levels of total CC2D1A
Immunogen Description	A synthesized peptide derived from human CC2D1A
Other Names	Coiled coil and C2 domain containing 1A; FREUD 1; Freud 1/Aki1; MRT3;
Accession No.	Uniprot:Q6P1N0
Uniprot	Q6P1N0
Calculated MW	130kDa
Formulation	Rabbit IgG in phosphate buffered saline , pH 7.4, 150mM NaCl, 0.02% sodium azide and 50% glycerol.
Storage	Store at +4 Λ C short term. Store at -20 Λ C long term. Avoid freeze / thaw cycle.

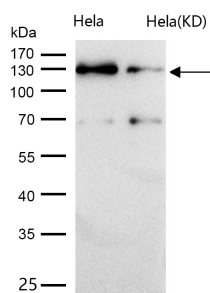
Application Details

WB:1:500~1:2000ICC/IF:1:50~1:200FC:1:50

Images



Western blot analysis of CC2D1A expression in Hela cell lysate.



All lanes use the Antibody at 1:1K dilution for 1 hour at room temperature.

Product Description

May play a role in the altered regulation of HTR1A associated with anxiety and major depression. It also mediates HDAC-independent repression of HTR1A promoter in neuronal cell.

Note: This product is for in vitro research use only