

## HTF9C Rabbit mAb

Catalog No: #56915

Package Size: #56915-1 50ul #56915-2 100ul

Orders: [order@signalwayantibody.com](mailto:order@signalwayantibody.com)Support: [tech@signalwayantibody.com](mailto:tech@signalwayantibody.com)

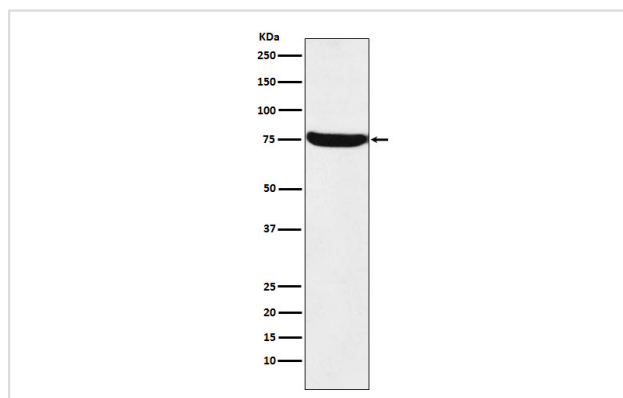
## Description

Product Name	HTF9C Rabbit mAb
Host Species	Rabbit
Clonality	Monoclonal
Isotype	Rabbit IgG
Purification	Affinity-chromatography
Applications	WB IHC ICC/IF
Species Reactivity	Human
Specificity	HTF9C Antibody detects endogenous levels of total HTF9C
Immunogen Description	A synthesized peptide derived from HTF9C
Other Names	HTF9C; TRMT2A;
Accession No.	Uniprot:Q8IZ69
Uniprot	Q8IZ69
Calculated MW	75kDa
Formulation	Rabbit IgG in phosphate buffered saline , pH 7.4, 150mM NaCl, 0.02% sodium azide and 50% glycerol.
Storage	Store at +4 $\Lambda$ C short term. Store at -20 $\Lambda$ C long term. Avoid freeze / thaw cycle.

## Application Details

WB:1:500~1:2000IHC:1:50~1:200ICC/IF:1:50~1:200

## Images



Western blot analysis of HTF9C expression in A431 cell lysate.

## Product Description

May be involved in nucleic acid metabolism and/or modifications.

---

Note: This product is for in vitro research use only