

## SerpinB3 Rabbit mAb

Catalog No: #56921

Package Size: #56921-1 50ul #56921-2 100ul

Orders: [order@signalwayantibody.com](mailto:order@signalwayantibody.com)Support: [tech@signalwayantibody.com](mailto:tech@signalwayantibody.com)

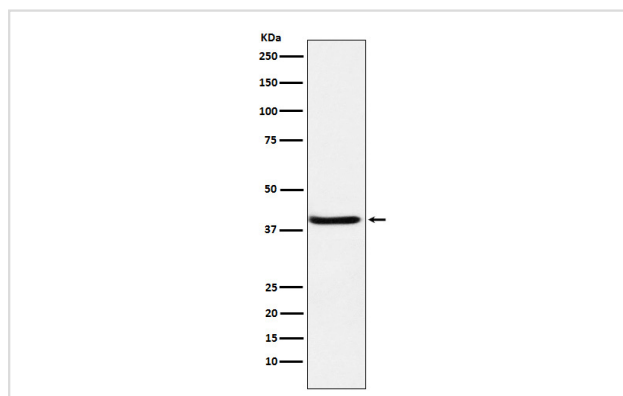
## Description

Product Name	SerpinB3 Rabbit mAb
Host Species	Rabbit
Clonality	Monoclonal
Isotype	Rabbit IgG
Purification	Affinity-chromatography
Applications	WB IHC ICC/IF
Species Reactivity	Human
Specificity	SerpinB3 Antibody detects endogenous levels of total SerpinB3
Immunogen Description	A synthesized peptide derived from SerpinB3
Other Names	SCC; SCCA; SCCA1; SERPINB3; T4A;
Accession No.	Uniprot:P29508
Uniprot	P29508
Calculated MW	39kDa
Formulation	Rabbit IgG in phosphate buffered saline , pH 7.4, 150mM NaCl, 0.02% sodium azide and 50% glycerol.
Storage	Store at +4Λ C short term. Store at -20Λ C long term. Avoid freeze / thaw cycle.

## Application Details

WB:1:500~1:2000IHC:1:50~1:200ICC/IF:1:50~1:200

## Images



Western blot analysis of SerpinB3 expression in A431 cell lysate.

## Product Description

May act as a protease inhibitor to modulate the host immune response against tumor cells.

---

Note: This product is for in vitro research use only