

NALP4 Antibody

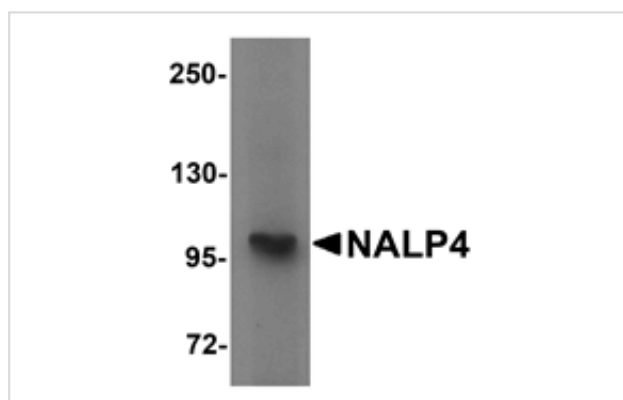
Catalog No: #25179

Orders: order@signalwayantibody.comSupport: tech@signalwayantibody.com

Description

Product Name	NALP4 Antibody
Host Species	Rabbit
Clonality	Polyclonal
Purification	Affinity chromatography purified via peptide column
Applications	ELISA WB
Species Reactivity	Hu Ms
Immunogen Type	Peptide
Immunogen Description	Raised against a 13 amino acid peptide near the center of human NALP4.
Target Name	NALP4
Other Names	NLR family pyrin domain containing 4, NLRP4, PYRIN-containing APAF1-like protein 4, PYPAF4, CLR19.5, PAN2, RNH2, CT58
Accession No.	Swiss-Prot:Q96MN2Gene ID:147945
Uniprot	Q96MN2
GeneID	147945;
Concentration	1mg/ml
Formulation	Supplied in PBS containing 0.02% sodium azide.
Storage	Can be stored at -20°C, stable for one year. As with all antibodies care should be taken to avoid repeated freeze thaw cycles. Antibodies should not be exposed to prolonged high temperatures.

Images



Western blot analysis of NALP4 in K562 cell lysate with NALP4 antibody at 1 ug/mL.

Background

NALP proteins include the apoptosis regulator APAF1 (apoptotic protease activating factor 1) and mammalian NOD-LRR proteins and are thought to be involved in inflammation and reproduction. NALP4, also known as PYRIN-containing APAF1-like protein 4, has a C-terminal leucine-rich repeat (LRR) region, an N-terminal Pyrin domain (PYD) followed by a NACHT domain, and a NACHT-associated domain. In transfected 293 cells, NALP4 suppressed NF- κ B induction by TNF- α and IL-1 β , suggesting NALP4 operates at a point of convergence in these two signaling pathways. NALP4 also suppressed NF- κ B induction resulting from overexpression of several adapter proteins and protein kinases involved in these pathways, including TRAF2, TRAF6, RIP, and IRAK2, as well as the IKK-alpha and IKK-beta, suggesting that NALP4 is critical in modulating NF- κ B activity.

Note: This product is for in vitro research use only