

Kappa light chain Rabbit mAb

Catalog No: #56938

Package Size: #56938-1 50ul #56938-2 100ul

Orders: order@signalwayantibody.comSupport: tech@signalwayantibody.com

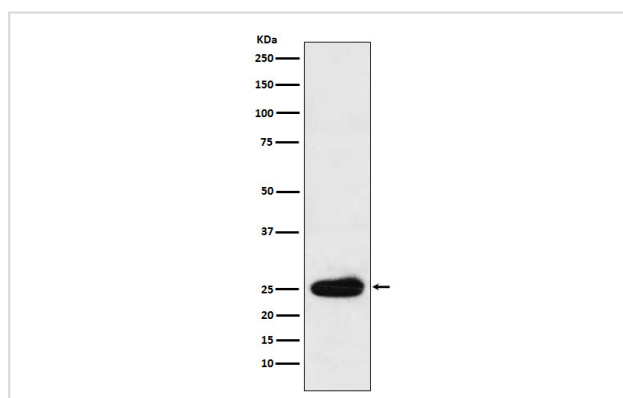
Description

Product Name	Kappa light chain Rabbit mAb
Host Species	Rabbit
Clonality	Monoclonal
Isotype	Rabbit IgG
Purification	Affinity-chromatography
Applications	WB IHC ICC/IF
Species Reactivity	Human
Specificity	Kappa light chain Antibody detects endogenous levels of total Kappa light chain
Immunogen Description	A synthesized peptide derived from human Kappa light chain
Other Names	HCAK1; IGKC; IGKCD;
Accession No.	Uniprot:P01601/P01834
Uniprot	P01601/P01834
Calculated MW	25kDa
Formulation	Rabbit IgG in phosphate buffered saline , pH 7.4, 150mM NaCl, 0.02% sodium azide and 50% glycerol.
Storage	Store at +4ℳ C short term. Store at -20ℳ C long term. Avoid freeze / thaw cycle.

Application Details

WB:1:500~1:2000IHC:1:50~1:200ICC/IF:1:50~1:200

Images



Western blot analysis of Kappa light chain expression in Human plasma cell lysate.

Product Description

V region of the variable domain of immunoglobulin light chains that participates in the antigen recognition (PubMed:24600447). Immunoglobulins, also known as antibodies, are membrane-bound or secreted glycoproteins produced by B lymphocytes.

Note: This product is for in vitro research use only