

## CHD3 Rabbit mAb

Catalog No: #56950

Package Size: #56950-1 50ul #56950-2 100ul

Orders: [order@signalwayantibody.com](mailto:order@signalwayantibody.com)Support: [tech@signalwayantibody.com](mailto:tech@signalwayantibody.com)

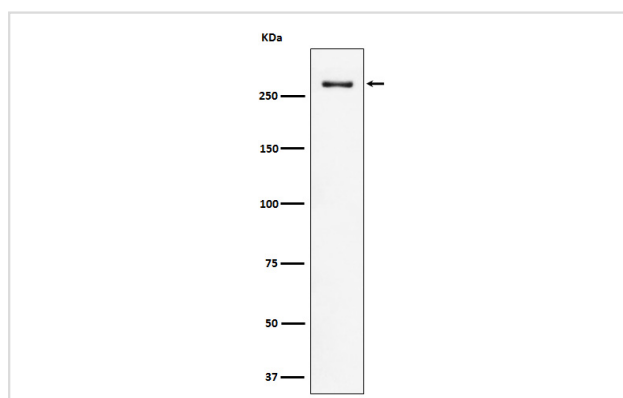
## Description

|                       |  |
|-----------------------|--|
| Product Name          | CHD3 Rabbit mAb  |
| Host Species          | Rabbit   |
| Clonality             | Monoclonal   |
| Isotype               | Rabbit IgG   |
| Purification          | Affinity-chromatography  |
| Applications          | WB IHC ICC/IF FC   |
| Species Reactivity    | Human  |
| Specificity           | CHD3 Antibody detects endogenous levels of total CHD3  |
| Immunogen Description | A synthesized peptide derived from human CHD3  |
| Other Names           | Chd3; Chd7; hZFH; Mi2 ALPHA; Prp7; Prp9 1; ZFH;  |
| Accession No.         | Uniprot:Q12873   |
| Uniprot               | Q12873   |
| Calculated MW         | 260kDa   |
| Formulation           | Rabbit IgG in phosphate buffered saline , pH 7.4, 150mM NaCl, 0.02% sodium azide and 50% glycerol. |
| Storage               | Store at +4 $\Lambda$ C short term. Store at -20 $\Lambda$ C long term. Avoid freeze / thaw cycle. |

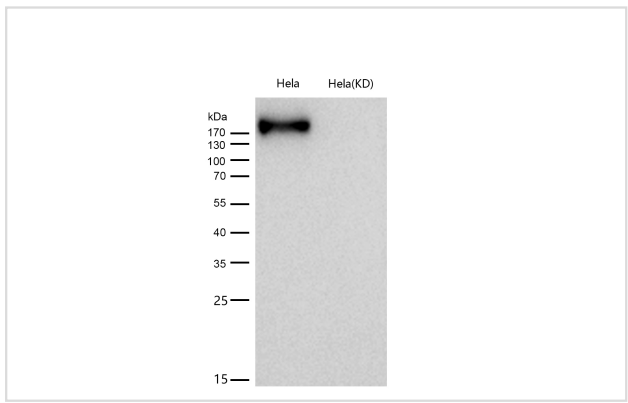
## Application Details

WB:1:500~1:2000IHC:1:50~1:200ICC/IF:1:50~1:200FC:1:50

## Images



Western blot analysis of CHD3 expression in HeLa cell lysate.



All lanes use the Antibody at 1:1K dilution for 1 hour at room temperature.

### Product Description

Component of the histone deacetylase NuRD complex which participates in the remodeling of chromatin by deacetylating histones. Required for anchoring centrosomal pericentrin in both interphase and mitosis, for spindle organization and centrosome integrity.

Note: This product is for in vitro research use only