

CD24 Rabbit mAb

Catalog No: #56960

Package Size: #56960-1 50ul #56960-2 100ul

Orders: order@signalwayantibody.comSupport: tech@signalwayantibody.com

Description

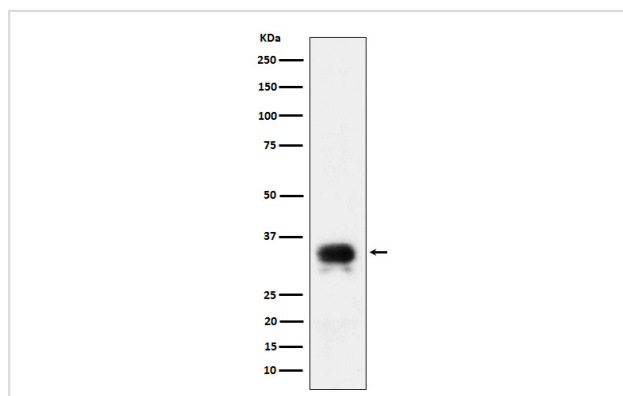
| | |
|-----------------------|--|
| Product Name | CD24 Rabbit mAb |
| Host Species | Rabbit |
| Clonality | Monoclonal |
| Isotype | Rabbit IgG |
| Purification | Affinity-chromatography |
| Applications | WB IP |
| Species Reactivity | Human |
| Specificity | CD24 Antibody detects endogenous levels of total CD24 |
| Immunogen Description | A synthesized peptide derived from human CD24 |
| Other Names | CD24; CD24 antigen; CD24A; HAS; Signal transducer CD24; |
| Accession No. | Uniprot:P25063 |
| Uniprot | P25063 |
| Calculated MW | 31-45kDa |
| Formulation | Rabbit IgG in phosphate buffered saline , pH 7.4, 150mM NaCl, 0.02% sodium azide and 50% glycerol. |
| Storage | Store at +4°C short term. Store at -20°C long term. Avoid freeze / thaw cycle. |

Application Details

WB:1:500~1:2000

IP:1:50

Images



Western blot analysis of CD24 expression in SH-SY5Y cell lysate.

Product Description

Modulates B-cell activation responses. Signaling could be triggered by the binding of a lectin-like ligand to the CD24 carbohydrates, and transduced by the release of second messengers derived from the GPI-anchor. Promotes AG-dependent proliferation of B-cells, and prevents their terminal differentiation into antibody-forming cells.

Note: This product is for in vitro research use only