

CPSF73 Rabbit mAb

Catalog No: #56984

Package Size: #56984-1 50ul #56984-2 100ul

Orders: order@signalwayantibody.com

Support: tech@signalwayantibody.com

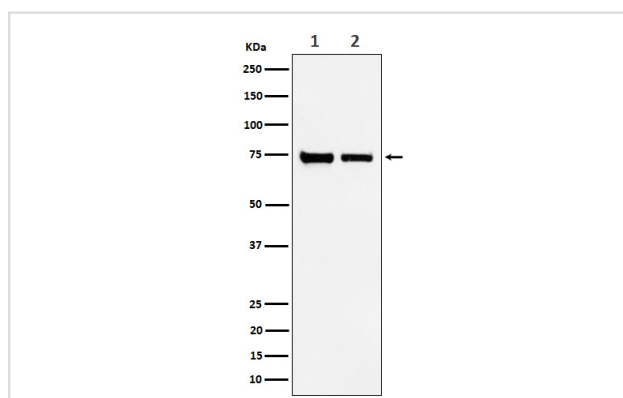
Description

| | |
|-----------------------|--|
| Product Name | CPSF73 Rabbit mAb |
| Host Species | Rabbit |
| Clonality | Monoclonal |
| Isotype | Rabbit IgG |
| Purification | Affinity-chromatography |
| Applications | WB ICC/IF FC |
| Species Reactivity | Human Mouse Rat |
| Specificity | CPSF73 Antibody detects endogenous levels of total CPSF73 |
| Immunogen Description | A synthesized peptide derived from human CPSF73 |
| Other Names | CPSF; cpsf3; CPSF73; YSH1; |
| Accession No. | Uniprot:Q9UKF6 |
| Uniprot | Q9UKF6 |
| Calculated MW | 77kDa |
| Formulation | Rabbit IgG in phosphate buffered saline , pH 7.4, 150mM NaCl, 0.02% sodium azide and 50% glycerol. |
| Storage | Store at +4ℳ C short term. Store at -20ℳ C long term. Avoid freeze / thaw cycle. |

Application Details

WB:1:500~1:2000ICC/IF:1:50~1:200FC:1:50

Images



Western blot analysis of CPSF73 expression in (1) HeLa cell lysate; (2) NIH/3T3 cell lysate.

Product Description

Component of the cleavage and polyadenylation specificity factor (CPSF) complex that play a key role in pre-mRNA 3'-end formation, recognizing the AAUAAA signal sequence and interacting with poly(A) polymerase and other factors to bring about cleavage and poly(A) addition.

Note: This product is for in vitro research use only