

## CLPTM1 Rabbit mAb

Catalog No: #57000

Package Size: #57000-1 50ul #57000-2 100ul

Orders: order@signalwayantibody.com

Support: tech@signalwayantibody.com

## Description

Product Name	CLPTM1 Rabbit mAb
Host Species	Rabbit
Clonality	Monoclonal
Isotype	Rabbit IgG
Purification	Affinity-chromatography
Applications	WB;IHC;IF
Species Reactivity	Human
Specificity	CLPTM1 Antibody detects endogenous levels of total CLPTM1
Immunogen Description	A synthesized peptide derived from human CLPTM1
Other Names	HS9; N14;
Accession No.	Uniprot:O96005
Uniprot	O96005
Calculated MW	76 kDa
SDS-PAGE MW	76 kDa
Formulation	Rabbit IgG in phosphate buffered saline , pH 7.4, 150mM NaCl, 0.02% sodium azide and 50% glycerol.
Storage	Store at +4 $^{\circ}$ C short term. Store at -20 $^{\circ}$ C long term. Avoid freeze / thaw cycle.

## Application Details

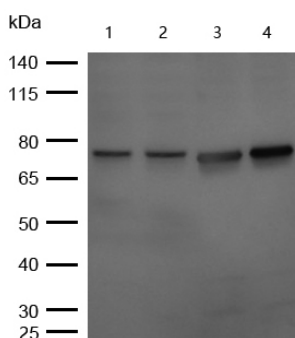
WB:1:500~1:2000

IHC:1:50~1:200

ICC/IF:1:50~1:200

FC:1:50

## Images



All lanes : Putative lipid scramblase CLPTM1 Rabbit mAb at 1/1k dilution

Lane 1 : HepG2 whole cell lysates

Lane 2 : Hela whole cell lysates      Lane 3 : MCF7 whole cell lysates

Lane 4 : HUVEC whole cell lysates

Lysates/proteins at 20  $\mu$ g per lane.

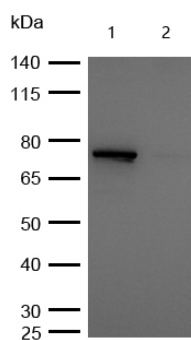
Secondary

All lanes : Goat Anti-Rabbit IgG H&L (HRP) at 1/20000 dilution

Predicted band size: 76 kDa

Observed band size: 76 kDa

Exposure time: 10 seconds

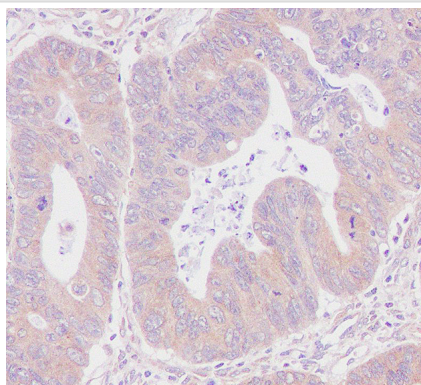


All lanes : Putative lipid scramblase CLPTM Rabbit mAb at 1/1k dilution

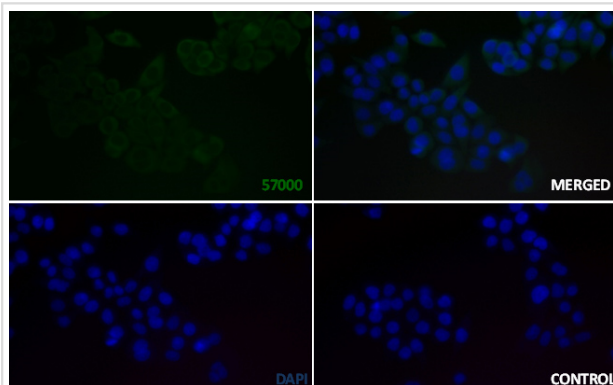
Lane 1 : Wild-type HeLa cell lysate

Lane 2 : Putative lipid scramblase CLPTM knockdown HeLa cell lysate

Lysates/proteins at 20 µg per lane.



Formalin-fixed, paraffin-embedded human colon carcinoma tissue stained for Putative lipid scramblase CLPTM1 using 57000 at 1/100 dilution in immunohistochemical analysis.



Immunocytochemistry/ Immunofluorescence Putative lipid scramblase CLPTM1 antibody (57000)  
57000 staining Putative lipid scramblase CLPTM1 in the HeLa cell line by ICC/IF. Cells were fixed with 4% Paraformaldehyde permeabilized with 0.1% Triton X-100. Samples were incubated with 57000 at a working dilution of 1/100. The secondary antibody was Alexa FluorB 488 goat anti rabbit, used at a dilution of 1/500. The negative control is shown in bottom right hand panel - for the negative control, purified 57000 was used at a dilution of 1/100 followed by Alexa FluorB 647 goat anti- rabbit antibody at a dilution of 1/500. Nuclei were counterstained with DAPI.

## Product Description

CLPTM1 may play a role in T-cell development. A chromosomal translocation involving CLPTM1 is found in a family with cleft lip and palate.

Note: This product is for in vitro research use only