

MRPS15 Rabbit mAb

Catalog No: #57016

Package Size: #57016-1 50ul #57016-2 100ul

Orders: order@signalwayantibody.comSupport: tech@signalwayantibody.com

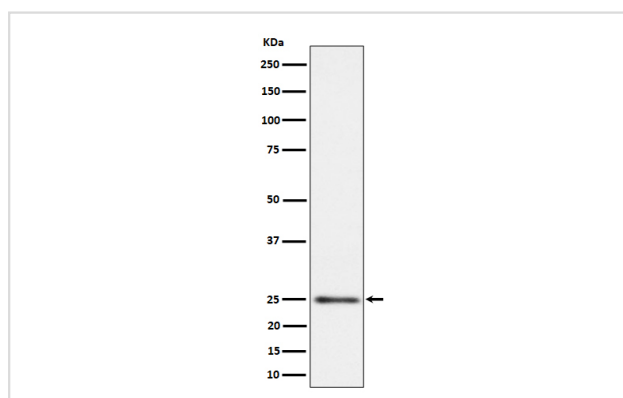
Description

Product Name	MRPS15 Rabbit mAb
Host Species	Rabbit
Clonality	Monoclonal
Isotype	Rabbit IgG
Purification	Affinity-chromatography
Applications	WB IHC ICC/IF
Species Reactivity	Human
Specificity	MRPS15 Antibody detects endogenous levels of total MRPS15
Immunogen Description	A synthesized peptide derived from human MRPS15
Other Names	DC37; MRPS15; RPMS15; S15mt;
Accession No.	Uniprot:P82914
Uniprot	P82914
Calculated MW	22kDa
Formulation	Rabbit IgG in phosphate buffered saline , pH 7.4, 150mM NaCl, 0.02% sodium azide and 50% glycerol.
Storage	Store at +4 Λ C short term. Store at -20 Λ C long term. Avoid freeze / thaw cycle.

Application Details

WB:1:500~1:2000IHC:1:50~1:200ICC/IF:1:50~1:200

Images



Western blot analysis of MRPS15 expression in HeLa cell lysate.

Product Description

Belongs to the ribosomal protein S15P family.

Note: This product is for in vitro research use only