

## Wnt16 Rabbit mAb

Catalog No: #57069

Package Size: #57069-1 50ul #57069-2 100ul

Orders: [order@signalwayantibody.com](mailto:order@signalwayantibody.com)Support: [tech@signalwayantibody.com](mailto:tech@signalwayantibody.com)

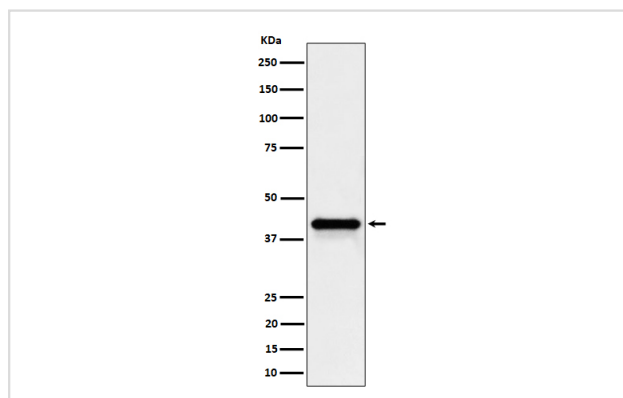
## Description

|                       |  |
|-----------------------|--|
| Product Name          | Wnt16 Rabbit mAb   |
| Host Species          | Rabbit   |
| Clonality             | Monoclonal   |
| Isotype               | Rabbit IgG   |
| Purification          | Affinity-chromatography  |
| Applications          | WB   |
| Species Reactivity    | Human Mouse Rat  |
| Specificity           | Wnt16 Antibody detects endogenous levels of total Wnt16  |
| Immunogen Description | A synthesized peptide derived from human Wnt16   |
| Other Names           | WNT16;   |
| Accession No.         | Uniprot:Q9UBV4   |
| Uniprot               | Q9UBV4   |
| Calculated MW         | 41kDa  |
| Formulation           | Rabbit IgG in phosphate buffered saline , pH 7.4, 150mM NaCl, 0.02% sodium azide and 50% glycerol. |
| Storage               | Store at +4Λ C short term. Store at -20Λ C long term. Avoid freeze / thaw cycle.                   |

## Application Details

WB:1:500~1:2000

## Images



Western blot analysis of Wnt16 expression in HepG2 cell lysate.

## Product Description

Ligand for members of the frizzled family of seven transmembrane receptors. Probable developmental protein. May be a signaling molecule which affects the development of discrete regions of tissues. Is likely to signal over only few cell diameters.

---

Note: This product is for in vitro research use only