

EXOC3 Rabbit mAb

Catalog No: #57083

Package Size: #57083-1 50ul #57083-2 100ul

Orders: order@signalwayantibody.com

Support: tech@signalwayantibody.com

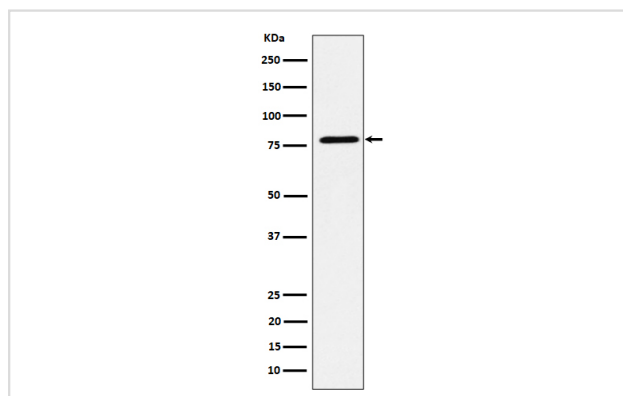
Description

Product Name	EXOC3 Rabbit mAb
Host Species	Rabbit
Clonality	Monoclonal
Isotype	Rabbit IgG
Purification	Affinity-chromatography
Applications	WB IHC ICC/IF IP
Species Reactivity	Human Mouse Rat
Specificity	EXOC3 Antibody detects endogenous levels of total EXOC3
Immunogen Description	A synthesized peptide derived from human EXOC3
Other Names	Exoc3; Sec6; SEC6L1; Sec6p;
Accession No.	Uniprot:O60645
Uniprot	O60645
Calculated MW	80kDa
Formulation	Rabbit IgG in phosphate buffered saline , pH 7.4, 150mM NaCl, 0.02% sodium azide and 50% glycerol.
Storage	Store at +4ℳ C short term. Store at -20ℳ C long term. Avoid freeze / thaw cycle.

Application Details

WB:1:500~1:2000IHC:1:50~1:200ICC/IF:1:50~1:200IP:1:50

Images



Western blot analysis of EXOC3 expression in MCF7 cell lysate.

Product Description

Component of the exocyst complex involved in the docking of exocytic vesicles with fusion sites on the plasma membrane.

Note: This product is for in vitro research use only