

EDG-4 Polyclonal Antibody

Catalog No: #44223

Package Size: #44223-1 50ul #44223-2 100ul

Orders: order@signalwayantibody.comSupport: tech@signalwayantibody.com

Description

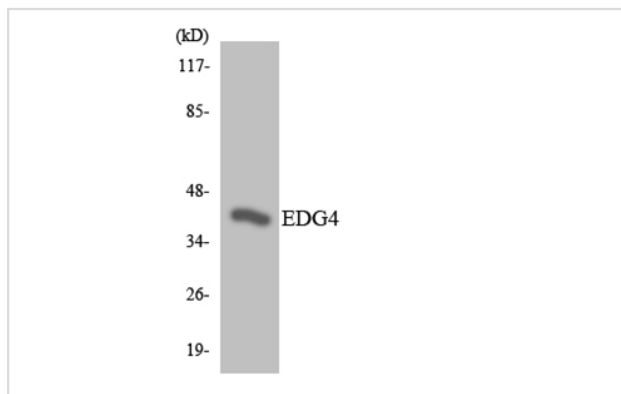
Product Name	EDG-4 Polyclonal Antibody
Host Species	Rabbit
Clonality	Polyclonal
Isotype	IgG
Purification	The antibody was affinity-purified from rabbit antiserum by affinity-chromatography using epitope-specific immunogen.
Applications	WB;IF/ICC;ELISA
Species Reactivity	Human;Mouse;Monkey
Specificity	EDG-4 Polyclonal Antibody detects endogenous levels of EDG-4 protein.
Immunogen Description	The antiserum was produced against synthesized peptide derived from human EDG4.
Accession No.	Swiss Prot:Q9HBW0GeneID:9170
Calculated MW	39kD
Concentration	1 mg/ml
Formulation	Liquid in PBS containing 50% glycerol, 0.5% BSA and 0.02% sodium azide.
Storage	Store at -20°C/1 year

Application Details

Western Blot: 1/500 - 1/2000.

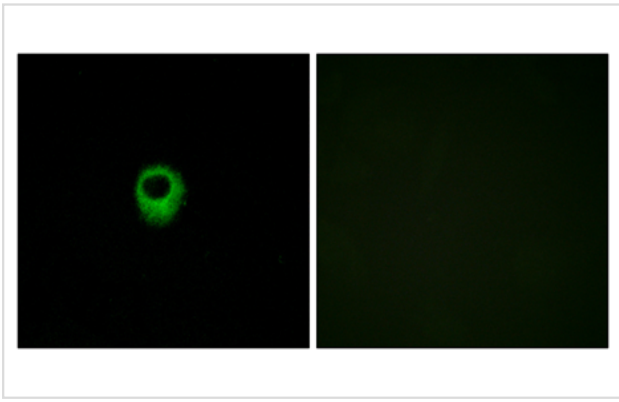
Immunofluorescence: 1/200 - 1/1000. ELISA: 1/40000.

Images



Western blot analysis of the lysates from K562 cells using EDG4 antibody.

Immunofluorescence analysis of MCF7 cells, using EDG4 Antibody.



Note: This product is for in vitro research use only