

# CAF-1 p60 Polyclonal Antibody

Catalog No: #44257



Package Size: #44257-1 50ul #44257-2 100ul

Orders: [order@signalwayantibody.com](mailto:order@signalwayantibody.com)  
Support: [tech@signalwayantibody.com](mailto:tech@signalwayantibody.com)

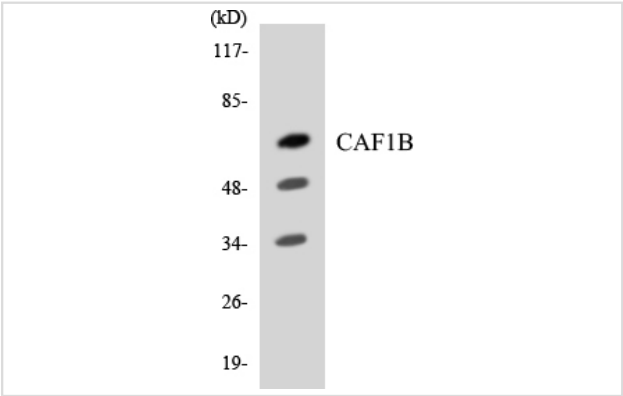
## Description

|                       |   |
|-----------------------|---|
| Product Name          | CAF-1 p60 Polyclonal Antibody   |
| Host Species          | Rabbit  |
| Clonality             | Polyclonal  |
| Isotype               | IgG   |
| Purification          | The antibody was affinity-purified from rabbit antiserum by affinity-chromatography using epitope-specific immunogen. |
| Applications          | WB;IHC;IF/ICC;ELISA   |
| Species Reactivity    | Human; Mouse;Rat  |
| Specificity           | CAF-1 p60 Polyclonal Antibody detects endogenous levels of CAF-1 p60 protein.   |
| Immunogen Description | The antiserum was produced against synthesized peptide derived from human CAF1B.                                      |
| Accession No.         | Gene Name:CHAF1BSwiss-Prot#:Q13112NCBI Gene ID:8208   |
| Calculated MW         | 61kD  |
| Concentration         | 1 mg/ml   |
| Formulation           | Liquid in PBS containing 50% glycerol, 0.5% BSA and 0.02% sodium azide.   |
| Storage               | Store at -20°C/1 year   |

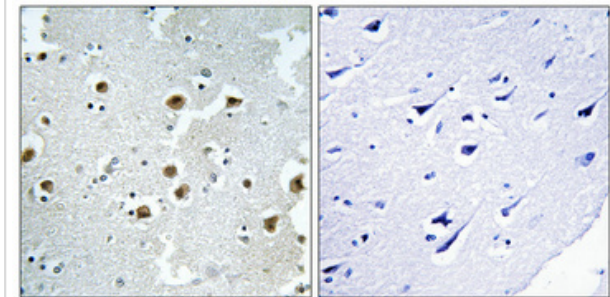
## Application Details

|                                      |
|--------------------------------------|
| Western Blot: 1/500 - 1/2000.        |
| Immunohistochemistry: 1/100 - 1/300. |
| Immunofluorescence: 1/200 - 1/1000.  |
| ELISA: 1/20000.                      |

## Images



Western blot analysis of the lysates from RAW264.7 cells using CAF1B antibody.



Immunohistochemical analysis of paraffin-embedded Human brain.

---

Note: This product is for in vitro research use only