

CaMKII alpha (Phospho-Thr286) Rabbit mAb

Catalog No: #14292

Package Size: #14292-1 50ul #14292-2 100ul

Orders: order@signalwayantibody.com

Support: tech@signalwayantibody.com

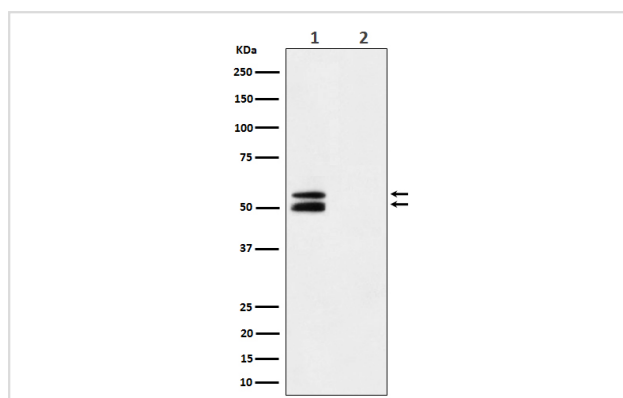
Description

Product Name	CaMKII alpha (Phospho-Thr286) Rabbit mAb
Host Species	Rabbit
Clonality	Monoclonal
Isotype	Rabbit IgG
Purification	Affinity-chromatography
Applications	WB IHC
Species Reactivity	Mouse Rat
Specificity	Phospho-CaMKII alpha (T286) Antibody detects endogenous levels of total Phospho-CaMKII alpha (T286)
Immunogen Description	A synthesized peptide derived from human Phospho-CaMKII alpha (T286)
Other Names	Camk2; Camk2a; Camk2b; CAMKA; CaMKII; CaMKIINalpha;
Accession No.	Q9UQM7/P11798/P11275
Calculated MW	50-60kDa
Formulation	Rabbit IgG in phosphate buffered saline , pH 7.4, 150mM NaCl, 0.02% sodium azide and 50% glycerol.
Storage	Store at -20°C for long term preservation (recommended). Store at 4°C for short term use.

Application Details

WB 1:500~1:2000 IHC 1:50~1:200

Images



Western blot analysis of Phospho-CaMKII alpha (T286) expression in Mouse brain treated with Lambda phosphatase cell lysate.

Background

Function: CaM-kinase II (CAMK2) is a prominent kinase in the central nervous system that may function in long-term potentiation and neurotransmitter release. Member of the NMDAR signaling complex in excitatory synapses, it may regulate NMDAR-dependent potentiation of the AMPAR and synaptic plasticity.

Note: This product is for in vitro research use only