

## Phospho-MCU(S92) Antibody

Catalog No: #14297

Package Size: #14297-1 50ul #14297-2 100ul

Orders: order@signalwayantibody.com

Support: tech@signalwayantibody.com

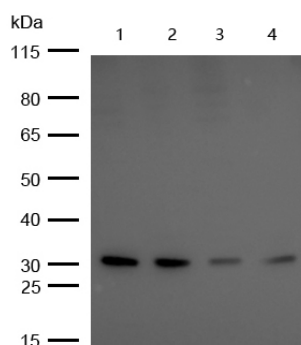
## Description

Product Name	Phospho-MCU(S92) Antibody
Host Species	Rabbit
Clonality	Polyclonal
Isotype	IgG
Purification	Affinity-chromatography
Applications	WB;IHC;IF
Species Reactivity	Human;Mouse;Rat
Specificity	Phospho-MCU(S92) Antibody detects endogenous levels of total Phospho-MCU(S92)
Immunogen Description	A synthesized peptide derived from human Phospho-MCU(S92)
Other Names	C10orf42; Calcium uniporter protein mitochondrial; Ccdc109a; HsMCU; Mitochondrial Calcium Uniporter;
Accession No.	Q8NE86
Calculated MW	40kDa
SDS-PAGE MW	32kDa
Concentration	2mg/ml
Formulation	Rabbit IgG in phosphate buffered saline , pH 7.4, 150mM NaCl, 0.02% sodium azide and 50% glycerol.
Storage	Store at -20°C for long term preservation (recommended). Store at 4°C for short term use.

## Application Details

WB 1:500~1:2000 IHC 1:50~1:200 ICC/IF 1:50~1:200

## Images



All lanes : Phospho-MCU(S92) Rabbit mAb at 1/1k dilution

Lane 1 : MCF7 whole cell lysates

Lane 2 : 293T whole cell lysates

Lane 3 : A549 whole cell lysates

Lane 4 : Rat Liver lysates

Lysates/proteins at 20 µg per lane.

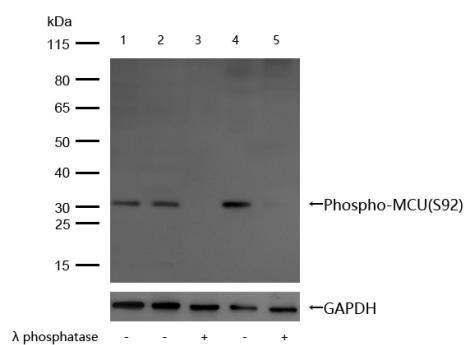
Secondary

All lanes : Goat Anti-Rabbit IgG H&amp;L (HRP) at 1/20000 dilution

Predicted band size: 40 kDa

Observed band size: 32 kDa

Exposure time: 8 seconds



All lanes : Phospho-MCU(S92) Rabbit mAb at 1/1k dilution

Lane 1 : 3T3 whole cell lysates

Lane 2 : 293T whole cell lysates

Lane 3 : 293T treated with Lambda Protein Phosphatase for 30min whole cell lysates

Lane 4 : MCF7 whole cell lysates

Lane 5 : MCF7 treated with Lambda Protein Phosphatase for 30min whole cell lysates

Lysates/proteins at 20 µg per lane.

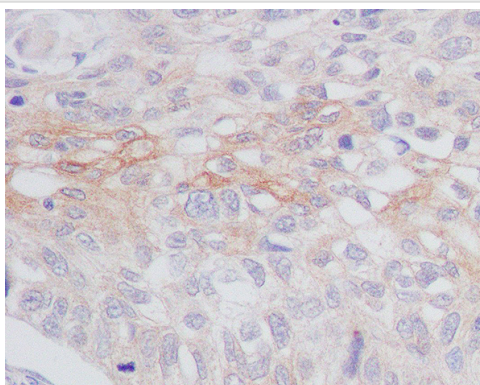
Secondary

All lanes : Goat Anti-Rabbit IgG H&L (HRP) at 1/20000 dilution

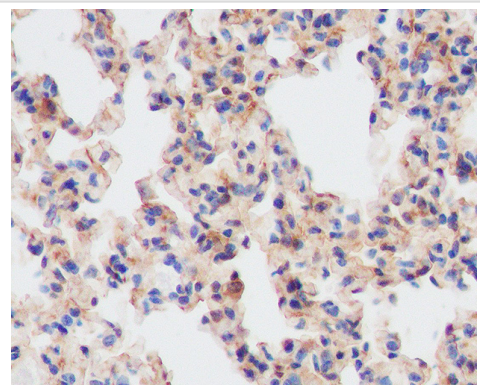
Predicted band size: 40 kDa

Observed band size: 32 kDa

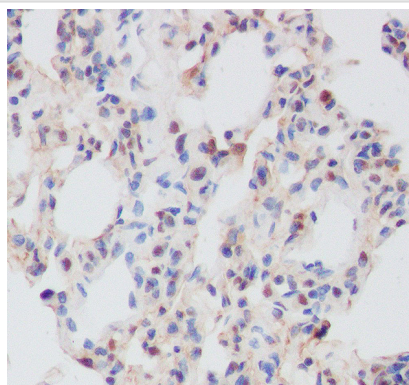
Exposure time: 10 seconds



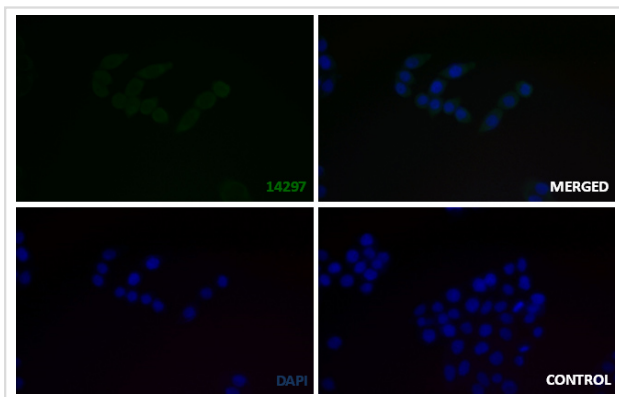
Formalin-fixed, paraffin-embedded human lung carcinoma tissue stained for Phospho-MCU(S92) using 14297 at 1/100 dilution in immunohistochemical analysis.



Formalin-fixed, paraffin-embedded mouse lung tissue stained for Phospho-MCU(S92) using 14297 at 1/100 dilution in immunohistochemical analysis.



Formalin-fixed, paraffin-embedded rat lung tissue stained for Phospho-MCU(S92) using 14297 at 1/100 dilution in immunohistochemical analysis.



#### Immunocytochemistry/ Immunofluorescence -

Phospho-MCU(S92) antibody (14297)

14297 staining Phospho-MCU(S92) in the HeLa cell line by ICC/IF. Cells were fixed with 4% Paraformaldehyde permeabilized with 0.1% Triton X-100.

Samples were incubated with 14297 at a working dilution of 1/100. The secondary antibody was Alexa FluorB 488 goat anti rabbit, used at a dilution of 1/500.

The negative control is shown in bottom right hand panel - for the negative control, purified 14297 was used at a dilution of 1/100 followed by Alexa FluorB 647 goat anti- rabbit antibody at a dilution of 1/500.

Nuclei were counterstained with DAPI.

## Background

Mitochondrial inner membrane calcium uniporter that mediates calcium uptake into mitochondria (PubMed:21685888, PubMed:21685886, PubMed:23101630, PubMed:22904319, PubMed:23178883, PubMed:22829870, PubMed:22822213, PubMed:24332854, PubMed:23755363, PubMed:26341627).

Note: This product is for in vitro research use only