

## SHB Rabbit mAb

Catalog No: #57141

Package Size: #57141-1 50ul #57141-2 100ul

Orders: order@signalwayantibody.com

Support: tech@signalwayantibody.com

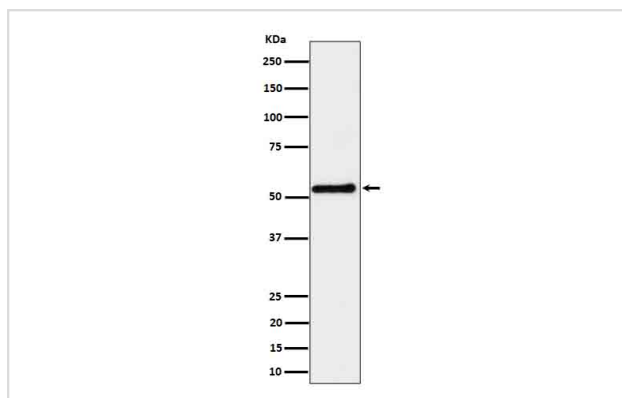
## Description

Product Name	SHB Rabbit mAb
Host Species	Rabbit
Clonality	Monoclonal
Isotype	Rabbit IgG
Purification	Affinity-chromatography
Applications	WB
Species Reactivity	Human Mouse Rat
Specificity	SHB Antibody detects endogenous levels of total SHB
Immunogen Description	A synthesized peptide derived from human SHB
Other Names	Shb;
Accession No.	Q15464
Calculated MW	55kDa
Formulation	Rabbit IgG in phosphate buffered saline , pH 7.4, 150mM NaCl, 0.02% sodium azide and 50% glycerol.
Storage	Store at -20°C for long term preservation (recommended). Store at 4°C for short term use.

## Application Details

WB 1:500~1:2000

## Images



Western blot analysis of SHB expression in K562 cell lysate.

## Background

Adapter protein which regulates several signal transduction cascades by linking activated receptors to downstream signaling components. May play a role in angiogenesis by regulating FGFR1, VEGFR2 and PDGFR signaling.

---

Note: This product is for in vitro research use only