

## NFE2 Rabbit mAb

Catalog No: #57148

Package Size: #57148-1 50ul #57148-2 100ul

Orders: [order@signalwayantibody.com](mailto:order@signalwayantibody.com)Support: [tech@signalwayantibody.com](mailto:tech@signalwayantibody.com)

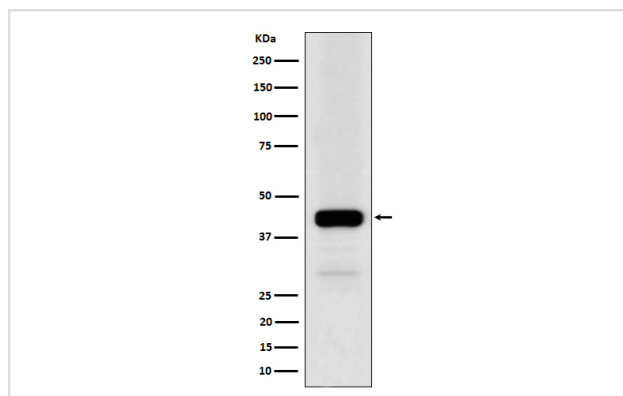
## Description

Product Name	NFE2 Rabbit mAb
Host Species	Rabbit
Clonality	Monoclonal
Isotype	Rabbit IgG
Purification	Affinity-chromatography
Applications	WB IHC ICC/IF IP
Species Reactivity	Human
Specificity	NFE2 Antibody detects endogenous levels of total NFE2
Immunogen Description	A synthesized peptide derived from human NFE2
Other Names	nfe2 ; Nuclear factor; p45 NFE2;
Accession No.	Q16621
Calculated MW	45kDa
Formulation	Rabbit IgG in phosphate buffered saline , pH 7.4, 150mM NaCl, 0.02% sodium azide and 50% glycerol.
Storage	Store at -20°C for long term preservation (recommended). Store at 4°C for short term use.

## Application Details

WB 1:500~1:2000 IHC 1:50~1:200 ICC/IF 1:50~1:200 IP 1:50

## Images



Western blot analysis of NFE2 expression in K562 cell lysate.

## Background

Component of the NF-E2 complex essential for regulating erythroid and megakaryocytic maturation and differentiation. Binds to the hypersensitive site 2 (HS2) of the beta-globin control region (LCR).

---

Note: This product is for in vitro research use only