

NALP8 Antibody

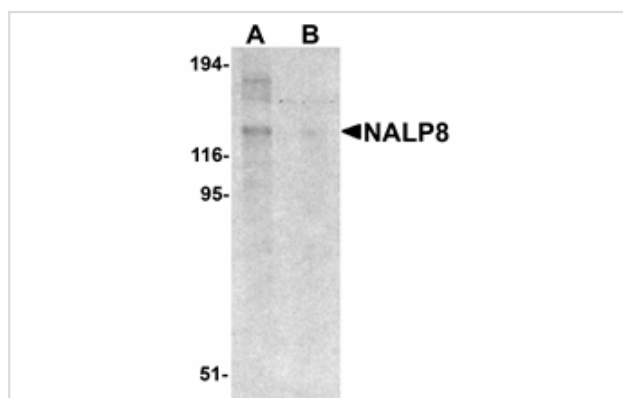
Catalog No: #25183

Orders: order@signalwayantibody.comSupport: tech@signalwayantibody.com

Description

Product Name	NALP8 Antibody
Host Species	Rabbit
Clonality	Polyclonal
Purification	Affinity chromatography purified via peptide column
Applications	ELISA WB
Species Reactivity	Hu
Immunogen Type	Peptide
Immunogen Description	Raised against a 16 amino acid peptide near the amino terminus of human NALP8.
Target Name	NALP8
Other Names	NACHT, LRR and PYD domains-containing protein 8, NLRP8, NOD16, CLR19.2, PAN4
Accession No.	Swiss-Prot:Q86W28Gene ID:126205
Uniprot	Q86W28
GeneID	126205;
Concentration	1mg/ml
Formulation	Supplied in PBS containing 0.02% sodium azide.
Storage	Can be stored at -20°C, stable for one year. As with all antibodies care should be taken to avoid repeated freeze thaw cycles. Antibodies should not be exposed to prolonged high temperatures.

Images



Western blot analysis of NALP8 in human colon tissue lysate with NALP8 antibody at 1 ug/mL in (A) the absence and (B) the presence of blocking peptide.

Background

NALP proteins are cytoplasmic proteins that form a subfamily within the larger CATERPILLER family and are thought to play a crucial role in cell proliferation and reproduction. Like all other NALP family members, NALP8 has a C-terminal leucine-rich repeat (LRR) region, an N-terminal Pyrin domain (PYD) followed by a NACHT domain, and a NACHT-associated domain. It maps to chromosome 19q13.42 and is thought to be expressed in testis and ovary, suggesting that NALP8 may be involved in reproduction. Surprisingly, NALP8 seems to be universal in mammals except for rodents, suggesting that the gene may have been lost during evolution.

Note: This product is for in vitro research use only