

## NALP10 Antibody

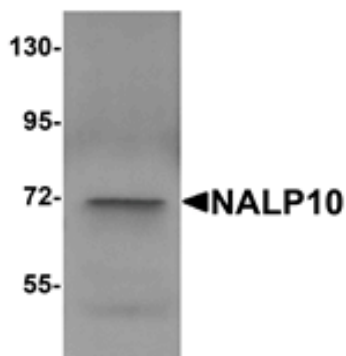
Catalog No: #25184

Orders: [order@signalwayantibody.com](mailto:order@signalwayantibody.com)Support: [tech@signalwayantibody.com](mailto:tech@signalwayantibody.com)

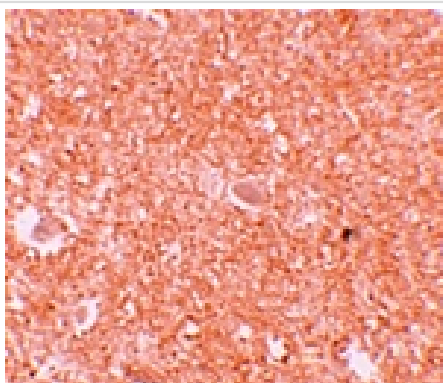
## Description

Product Name	NALP10 Antibody
Host Species	Rabbit
Clonality	Polyclonal
Purification	Affinity chromatography purified via peptide column
Applications	ELISA WB IHC
Species Reactivity	Hu
Immunogen Type	Peptide
Immunogen Description	Raised against a 14 amino acid peptide near the amino terminus of human NALP10.
Target Name	NALP10
Other Names	NACHT, LRR and PYD domains-containing protein 10, NLRP10, NOD8, CLR11.1, PAN5, PYNOD
Accession No.	Swiss-Prot:Q86W26Gene ID:338322
Uniprot	Q86W26
GeneID	338322;
Concentration	1mg/ml
Formulation	Supplied in PBS containing 0.02% sodium azide.
Storage	Can be stored at -20°C, stable for one year. As with all antibodies care should be taken to avoid repeated freeze thaw cycles. Antibodies should not be exposed to prolonged high temperatures.

## Images



Western blot analysis of NALP10 in human brain tissue lysate with NALP10 antibody at 1 ug/mL.



Immunohistochemistry of NALP10 in human brain tissue with NALP10 antibody at 10 ug/mL.

## Background

---

NALP proteins are cytoplasmic proteins that form a subfamily within the larger CATERPILLER family and are thought to play a crucial role in cell proliferation and reproduction. Like all other NALP family members, NALP10 has a C-terminal leucine-rich repeat (LRR) region, an N-terminal Pyrin domain (PYD) followed by a NACHT domain, and a NACHT-associated domain. It was initially identified as PYNOD, an Apaf-1-like protein that binds to ASC, caspase-1 and IL-1 $\beta$ , inhibiting the autoprocessing of caspase-1, caspase-1-mediated IL-1 $\beta$  processing, and ASC aggregation. NALP10 is thus a potent regulator of apoptosis and inflammation.

---

Note: This product is for in vitro research use only